

### Young Gift Ideas

for BOYS and GIRLS

Gay plaid on a roll, slide-fastener boot type slipper.

Warm felt house slippers with tan leather for the growing boy.

Men's and Women's slippers

Prices range from 48c to \$2.00 in juvenile sizes—every pair a welcome gift for boy or girl.

Store Will Be Open Every Night Until 9 P. M. Until Xmas, Starting Wednesday, Dec. 18.

### ABOUT TOWN

Courtesy's Naval Cadets will hold their regular practice drill tomorrow night at 8 o'clock. Important business will be transacted and all members are urged to be present. Any member who has not received a notice from the major is asked to go to meet with Sergeant Adams at once.

John Mather Chapter Order of DeMolay will give the DeMolay degree to nine candidates tonight at the Masonic Temple.

### Antacid Powder

For sour, acid stomach. Relief from indigestion, belching, nausea, gas, etc. Results guaranteed.

ARTHUR DRUG STORE

### TODAY'S WINNERS

Reg. No. A-L 381  
Reg. No. C-A 241  
Reg. No. C-J 537  
Reg. No. B-W 581  
Reg. No. M-G 151  
Reg. No. B-K 730  
Reg. No. G-H 290  
Reg. No. X-B 353  
Reg. No. B-F 347  
Reg. No. P-H 614

### 5 Gallons of Franklin Gas FREE!

Every Day A Winner At FRANKLIN GAS STATION

Corner of Center and Adams Streets

### Guaranteed BATTERIES

Does your starter turn over quickly in the morning? Our batteries are guaranteed for your protection, but that is not enough. They contain plenty of pure lead to insure instant starting.

NORTON ELECTRICAL INSTRUMENT CO. Hillard Street Phone 4060

### The W. G. Glenney Co.

Coal, Lumber, Mason's Supplies, Paint.

Universal Electrical Appliances. 238 N. Main St. Phone 4149 Manchester

### GET READY FOR WINTER

STORM SASH and STORM DOORS

SAVE YOU MONEY

You will save in fuel alone their cost to say nothing of the increased comfort of your home this winter.

Prices are reasonable! For instance 2-light Storm Sash 2' 6" x 4' 3 1/2" ..... \$1.00 ea. 2' 6" x 5' 7 1/2" ..... \$2.00 ea. Storm Door with 1 light of stain 2' 6" x 6' 6" ..... \$4.50

Then there's a combination screen and storm door at \$6.00 for the 2' 6" x 6' 6" size that's very popular.

Let us help you get ready for cold weather. There's plenty of time!

### FOR BOYS and GIRLS

Mystery Stories 50c each  
Football Stories 50c each  
Children's Classics 50c and \$1  
Children of Other Lands Stories 50c each

Illustrated Stories for Children

The Funny Noise Cinder  
Joan and Jack  
Little Engine That Could  
Jock and Jill

### Ping Pong Table Tops

5' x 9' in 2 pieces. \$6.50  
3 1/2" thick

5' x 9' in one piece. \$7.50  
3 1/2" thick

3' 8" x 6' 0" in 2 pieces. \$3.80  
3 1/2" thick

### Boxed Linen Like Books

For Children. 4 to 8 Books

25c-50c set

Store Open Every Evening Until 9 P. M. Starting Wednesday, December 18, and Through and Including Tuesday, December 24.

### The JW. HALE CORP.

MANCHESTER CONN.

### For Quality RANGE OIL 7 1/2 gal.

Dial 4129 CAMPBELL Service Station

Dial 5321 For Free Delivery WELDON DRUG CO.

Read The Herald Advs.

### Do Your Gift Shopping At Hale's For Quality And Economy

Men's Handkerchiefs

Initialed Linen Handkerchiefs, 25c each  
Initialed Linen Handkerchiefs, 35c each  
Plain Linen Handkerchiefs, 25c each  
Initialed Cotton Handkerchiefs, 59c each  
Boys' Linen Handkerchiefs, 15c each

Ladies' Linen HANDKERCHIEFS

Ladies' Linen Handkerchiefs, 10c each  
Ladies' Cambric Linen Handkerchiefs, 12 1/2c each  
Children's Linen Handkerchiefs, 10c and 15c each

Ladies' Fine Quality Hand Made Linen HANDKERCHIEFS

White and colored. With Apertures and applique finest needle art. 25c and 50c each

3 for 50c

Xmas Greeting Cards 5c and 10c each  
Boxed Xmas Cards 25c and 50c box  
Cellophane Pack of 12 Cards 15c

\$2.98 Men's Military Brush Sets \$1.59  
Compacts \$1. to \$2.50

BATH SALTS Yardley's ..... \$1.10  
Evening In Paris ..... \$1.10  
Lancelle ..... 25c and 50c

TOILET SET \$3.50  
Comb, Brush, and Mirror. Colors: Matte, Rose, and Black.

Folding Handkerchief Cases 59c-\$1.00  
Made of silk and satin. Trimmed with ribbon and lace. Pastel colors.

Perfumes  
Gemy ..... 55c  
Evening In Paris. 55c and \$1.10  
Coty's ..... \$1.00  
Quelle Fleur ..... \$1.00

Boxed Stationery  
White and colored. 24 sheets. 34 envelopes.  
25c 50c \$1.00 each

Xmas Wrapping Paper 10c package  
Paper Tie-Ties ..... 10c roll  
Tapes and Seals ..... 10c pkg.

5-Year Diaries 50c and \$1. each  
Scrap Books 50c and \$1. each

Store Open Every Evening Until 9 P. M. Starting Wednesday, December 18, and Through and Including Tuesday, December 24.

### FOR BOYS and GIRLS

Mystery Stories 50c each  
Football Stories 50c each  
Children's Classics 50c and \$1  
Children of Other Lands Stories 50c each

Illustrated Stories for Children

The Funny Noise Cinder  
Joan and Jack  
Little Engine That Could  
Jock and Jill

### Ping Pong Table Tops

5' x 9' in 2 pieces. \$6.50  
3 1/2" thick

5' x 9' in one piece. \$7.50  
3 1/2" thick

3' 8" x 6' 0" in 2 pieces. \$3.80  
3 1/2" thick

### The JW. HALE CORP.

MANCHESTER CONN.

### Do Your Gift Shopping At Hale's For Quality And Economy

Men's Handkerchiefs

Initialed Linen Handkerchiefs, 25c each  
Initialed Linen Handkerchiefs, 35c each  
Plain Linen Handkerchiefs, 25c each  
Initialed Cotton Handkerchiefs, 59c each  
Boys' Linen Handkerchiefs, 15c each

Ladies' Linen HANDKERCHIEFS

Ladies' Linen Handkerchiefs, 10c each  
Ladies' Cambric Linen Handkerchiefs, 12 1/2c each  
Children's Linen Handkerchiefs, 10c and 15c each

Ladies' Fine Quality Hand Made Linen HANDKERCHIEFS

White and colored. With Apertures and applique finest needle art. 25c and 50c each

3 for 50c

Xmas Greeting Cards 5c and 10c each  
Boxed Xmas Cards 25c and 50c box  
Cellophane Pack of 12 Cards 15c

\$2.98 Men's Military Brush Sets \$1.59  
Compacts \$1. to \$2.50

BATH SALTS Yardley's ..... \$1.10  
Evening In Paris ..... \$1.10  
Lancelle ..... 25c and 50c

TOILET SET \$3.50  
Comb, Brush, and Mirror. Colors: Matte, Rose, and Black.

Folding Handkerchief Cases 59c-\$1.00  
Made of silk and satin. Trimmed with ribbon and lace. Pastel colors.

Perfumes  
Gemy ..... 55c  
Evening In Paris. 55c and \$1.10  
Coty's ..... \$1.00  
Quelle Fleur ..... \$1.00

Boxed Stationery  
White and colored. 24 sheets. 34 envelopes.  
25c 50c \$1.00 each

Xmas Wrapping Paper 10c package  
Paper Tie-Ties ..... 10c roll  
Tapes and Seals ..... 10c pkg.

5-Year Diaries 50c and \$1. each  
Scrap Books 50c and \$1. each

Store Open Every Evening Until 9 P. M. Starting Wednesday, December 18, and Through and Including Tuesday, December 24.

### Do Your Gift Shopping At Hale's For Quality And Economy

Men's Handkerchiefs

Initialed Linen Handkerchiefs, 25c each  
Initialed Linen Handkerchiefs, 35c each  
Plain Linen Handkerchiefs, 25c each  
Initialed Cotton Handkerchiefs, 59c each  
Boys' Linen Handkerchiefs, 15c each

Ladies' Linen HANDKERCHIEFS

Ladies' Linen Handkerchiefs, 10c each  
Ladies' Cambric Linen Handkerchiefs, 12 1/2c each  
Children's Linen Handkerchiefs, 10c and 15c each

Ladies' Fine Quality Hand Made Linen HANDKERCHIEFS

White and colored. With Apertures and applique finest needle art. 25c and 50c each

3 for 50c

Xmas Greeting Cards 5c and 10c each  
Boxed Xmas Cards 25c and 50c box  
Cellophane Pack of 12 Cards 15c

\$2.98 Men's Military Brush Sets \$1.59  
Compacts \$1. to \$2.50

BATH SALTS Yardley's ..... \$1.10  
Evening In Paris ..... \$1.10  
Lancelle ..... 25c and 50c

TOILET SET \$3.50  
Comb, Brush, and Mirror. Colors: Matte, Rose, and Black.

Folding Handkerchief Cases 59c-\$1.00  
Made of silk and satin. Trimmed with ribbon and lace. Pastel colors.

Perfumes  
Gemy ..... 55c  
Evening In Paris. 55c and \$1.10  
Coty's ..... \$1.00  
Quelle Fleur ..... \$1.00

Boxed Stationery  
White and colored. 24 sheets. 34 envelopes.  
25c 50c \$1.00 each

Xmas Wrapping Paper 10c package  
Paper Tie-Ties ..... 10c roll  
Tapes and Seals ..... 10c pkg.

5-Year Diaries 50c and \$1. each  
Scrap Books 50c and \$1. each

Store Open Every Evening Until 9 P. M. Starting Wednesday, December 18, and Through and Including Tuesday, December 24.

### Do Your Gift Shopping At Hale's For Quality And Economy

Men's Handkerchiefs

Initialed Linen Handkerchiefs, 25c each  
Initialed Linen Handkerchiefs, 35c each  
Plain Linen Handkerchiefs, 25c each  
Initialed Cotton Handkerchiefs, 59c each  
Boys' Linen Handkerchiefs, 15c each

Ladies' Linen HANDKERCHIEFS

Ladies' Linen Handkerchiefs, 10c each  
Ladies' Cambric Linen Handkerchiefs, 12 1/2c each  
Children's Linen Handkerchiefs, 10c and 15c each

Ladies' Fine Quality Hand Made Linen HANDKERCHIEFS

White and colored. With Apertures and applique finest needle art. 25c and 50c each

3 for 50c

Xmas Greeting Cards 5c and 10c each  
Boxed Xmas Cards 25c and 50c box  
Cellophane Pack of 12 Cards 15c

\$2.98 Men's Military Brush Sets \$1.59  
Compacts \$1. to \$2.50

BATH SALTS Yardley's ..... \$1.10  
Evening In Paris ..... \$1.10  
Lancelle ..... 25c and 50c

TOILET SET \$3.50  
Comb, Brush, and Mirror. Colors: Matte, Rose, and Black.

Folding Handkerchief Cases 59c-\$1.00  
Made of silk and satin. Trimmed with ribbon and lace. Pastel colors.

Perfumes  
Gemy ..... 55c  
Evening In Paris. 55c and \$1.10  
Coty's ..... \$1.00  
Quelle Fleur ..... \$1.00

Boxed Stationery  
White and colored. 24 sheets. 34 envelopes.  
25c 50c \$1.00 each

Xmas Wrapping Paper 10c package  
Paper Tie-Ties ..... 10c roll  
Tapes and Seals ..... 10c pkg.

5-Year Diaries 50c and \$1. each  
Scrap Books 50c and \$1. each

Store Open Every Evening Until 9 P. M. Starting Wednesday, December 18, and Through and Including Tuesday, December 24.

### Do Your Gift Shopping At Hale's For Quality And Economy

Men's Handkerchiefs

Initialed Linen Handkerchiefs, 25c each  
Initialed Linen Handkerchiefs, 35c each  
Plain Linen Handkerchiefs, 25c each  
Initialed Cotton Handkerchiefs, 59c each  
Boys' Linen Handkerchiefs, 15c each

Ladies' Linen HANDKERCHIEFS

Ladies' Linen Handkerchiefs, 10c each  
Ladies' Cambric Linen Handkerchiefs, 12 1/2c each  
Children's Linen Handkerchiefs, 10c and 15c each

Ladies' Fine Quality Hand Made Linen HANDKERCHIEFS

White and colored. With Apertures and applique finest needle art. 25c and 50c each

3 for 50c

Xmas Greeting Cards 5c and 10c each  
Boxed Xmas Cards 25c and 50c box  
Cellophane Pack of 12 Cards 15c

\$2.98 Men's Military Brush Sets \$1.59  
Compacts \$1. to \$2.50

BATH SALTS Yardley's ..... \$1.10  
Evening In Paris ..... \$1.10  
Lancelle ..... 25c and 50c

TOILET SET \$3.50  
Comb, Brush, and Mirror. Colors: Matte, Rose, and Black.

Folding Handkerchief Cases 59c-\$1.00  
Made of silk and satin. Trimmed with ribbon and lace. Pastel colors.

Perfumes  
Gemy ..... 55c  
Evening In Paris. 55c and \$1.10  
Coty's ..... \$1.00  
Quelle Fleur ..... \$1.00

Boxed Stationery  
White and colored. 24 sheets. 34 envelopes.  
25c 50c \$1.00 each

Xmas Wrapping Paper 10c package  
Paper Tie-Ties ..... 10c roll  
Tapes and Seals ..... 10c pkg.

5-Year Diaries 50c and \$1. each  
Scrap Books 50c and \$1. each

Store Open Every Evening Until 9 P. M. Starting Wednesday, December 18, and Through and Including Tuesday, December 24.

### Do Your Gift Shopping At Hale's For Quality And Economy

Men's Handkerchiefs

Initialed Linen Handkerchiefs, 25c each  
Initialed Linen Handkerchiefs, 35c each  
Plain Linen Handkerchiefs, 25c each  
Initialed Cotton Handkerchiefs, 59c each  
Boys' Linen Handkerchiefs, 15c each

Ladies' Linen HANDKERCHIEFS

Ladies' Linen Handkerchiefs, 10c each  
Ladies' Cambric Linen Handkerchiefs, 12 1/2c each  
Children's Linen Handkerchiefs, 10c and 15c each

Ladies' Fine Quality Hand Made Linen HANDKERCHIEFS

White and colored. With Apertures and applique finest needle art. 25c and 50c each

3 for 50c

Xmas Greeting Cards 5c and 10c each  
Boxed Xmas Cards 25c and 50c box  
Cellophane Pack of 12 Cards 15c

\$2.98 Men's Military Brush Sets \$1.59  
Compacts \$1. to \$2.50

BATH SALTS Yardley's ..... \$1.10  
Evening In Paris ..... \$1.10  
Lancelle ..... 25c and 50c

TOILET SET \$3.50  
Comb, Brush, and Mirror. Colors: Matte, Rose, and Black.

Folding Handkerchief Cases 59c-\$1.00  
Made of silk and satin. Trimmed with ribbon and lace. Pastel colors.

Perfumes  
Gemy ..... 55c  
Evening In Paris. 55c and \$1.10  
Coty's ..... \$1.00  
Quelle Fleur ..... \$1.00

Boxed Stationery  
White and colored. 24 sheets. 34 envelopes.  
25c 50c \$1.00 each

Xmas Wrapping Paper 10c package  
Paper Tie-Ties ..... 10c roll  
Tapes and Seals ..... 10c pkg.

5-Year Diaries 50c and \$1. each  
Scrap Books 50c and \$1. each

Store Open Every Evening Until 9 P. M. Starting Wednesday, December 18, and Through and Including Tuesday, December 24.

### AVERAGE DAILY CIRCULATION

for the Month of November, 1933

5,783

Member of the Audit Bureau of Circulations

VOL. LV., NO. 66. (Classified Advertising on Page 13.)

MANCHESTER, CONN., TUESDAY, DECEMBER 17, 1933. (FOURTEEN PAGES) PRICE THREE CENTS

### G. O. P. CONCENTRATES ON COMING CAMPAIGN

Hoover Assails Relief Policies; Advances New Plan; Leaders Appeal to Anti-New Deal Democrats.

Cleveland, Dec. 17.—(AP)—The Ohio Republican party today concentrated on its campaign for the 1934 election, and the party's platform was adopted at a convention here today.

The former president, vigorously attacking the administration's relief policy, advanced a plan to confine public works projects to those which meet the needs of the public. "All other relief would go back to state and local authorities," he said.

Senator Thomas (D., Okla.) said the speech was a bid for the party's nomination when the delegates met at Cleveland Jan. 9.

In the capital, where the Republican national committee met yesterday, the G. O. P. leaders sought to attract anti-New Deal Democrats over to their side.

In a special election today in Michigan's 3rd congressional district, the Townsend Old Age Pension plan was an issue. Vernon H. Riffe, Republican supporter of the plan, was opposed by Howard W. Cavanaugh, Democrat, who is against the plan.

In Washington, Senator McKellar (D., Tenn.) condemned the Townsend plan as the "widest, most fantastic and most devastating suggestion produced."

But Dr. F. E. Townsend, a sponsor of the move to give \$200 a month to everybody over 60, said his group would file Third Party petitions in all states.

Hoover Lashes Relief Policies

St. Louis, Dec. 17.—(AP)—Herbert Hoover's slashing attack on the New Deal relief policy before the national today is a direct blow to the centralized relief based on the "welfare" system of American men and women.

The former Republican president, attacking President Roosevelt's recent speeches, offered his proposal for a relief system in which the federal government would be limited to the relief of the unemployed, and the states would be responsible for the relief of the dependent.

His caustic indictment of the Democratic administration generally, and his relief system in particular, drew cheers and laughter from the more than 1,000 persons who heard him address the John Hay Republican Club of St. Louis and its guests.

He arrested the administration of relief needs reform "right now," he demanded a plan to "confine public works projects to the projects which meet the needs of the nation," decentralize and turn back to the states and local communities all relief not essential to the national interest, and to make permanent the national relief fund.

Political leaders commented with approval at the examples of wit and sarcasm.

(Continued on Page Two)

### HINTS AT BREAK SOON IN MILNE KIDNAPING

Youth's Aunt Leaves Home With Federal Agent for Unknown Destination—His Watch Returned.

New York, Dec. 17.—(AP)—Milne, 4th, sped on mysterious errands in New York today as the federal agents and municipal police hunted for him and his supposed abductor.

An aunt, a brother and a nephew, the Townsend Old Age Pension plan was an issue. Vernon H. Riffe, Republican supporter of the plan, was opposed by Howard W. Cavanaugh, Democrat, who is against the plan.

In Washington, Senator McKellar (D., Tenn.) condemned the Townsend plan as the "widest, most fantastic and most devastating suggestion produced."

But Dr. F. E. Townsend, a sponsor of the move to give \$200 a month to everybody over 60, said his group would file Third Party petitions in all states.

Hoover Lashes Relief Policies

St. Louis, Dec. 17.—(AP)—Herbert Hoover's slashing attack on the New Deal relief policy before the national today is a direct blow to the centralized relief based on the "welfare" system of American men and women.

The former Republican president, attacking President Roosevelt's recent speeches, offered his proposal for a relief system in which the federal government would be limited to the relief of the unemployed, and the states would be responsible for the relief of the dependent.

His caustic indictment of the Democratic administration generally, and his relief system in particular, drew cheers and laughter from the more than 1,000 persons who heard him address the John Hay Republican Club of St. Louis and its guests.

He arrested the administration of relief needs reform "right now," he demanded a plan to "confine public works projects to the projects which meet the needs of the nation," decentralize and turn back to the states and local communities all relief not essential to the national interest, and to make permanent the national relief fund.

Political leaders commented with approval at the examples of wit and sarcasm.

(Continued on Page Two)

### Spellacy Urges CUT IN EXPENSES

Hartford's Mayor Also Proposes Restoration of Pay for Municipal Employees.

Hartford, Dec. 17.—(AP)—Mayor Spellacy today urged a reduction in municipal expenses and the restoration of all or part of the pay cut for all municipal employees.

In his first annual message to the common council, the Democratic chief executive pointed out the expenditures of the Board of Education and to survey the maintenance costs of Hartford's schools.

Mayor Spellacy, criticizing the city's financial condition, said that the council should take the lead in reducing expenses and that the city should be able to pay its bills.

He also urged the restoration of the pay of municipal employees, which had been cut as a result of the city's financial difficulties.

(Continued on Page Two)

### WOMAN EXECUTED; POISONED SPOUSE

Blonde Film Beauty Found Dead in Garage; Conflicting Statements Puzzle Officers Probing the Case.

Los Angeles, Dec. 17.—(AP)—A case of conflicting and mysterious circumstances controlled police today in the investigation of the death of Thelma Todd, blonde screen beauty.

Pinning definite traces of carbon monoxide poisoning, the county autopsy surgeon said she probably died in her garage about 10 p. m. Sunday, after she had been driven home from a party at the Hollywood party.

But Mrs. Martha Ford, wife of Wallace Ford of the films, told police she was in a building on Hollywood Sunday afternoon over the telephone.

"I am certain it was her voice," Mrs. Ford said. "She told me: 'I'll be with you in a half hour. I'll be with you, you'll drop dead.'"

"Oh, and another thing—I went to the party," she added.

(Continued on Page Six)

### WOMAN EXECUTED; POISONED SPOUSE

Blonde Film Beauty Found Dead in Garage; Conflicting Statements Puzzle Officers Probing the Case.

Los Angeles, Dec. 17.—(AP)—A case of conflicting and mysterious circumstances controlled police today in the investigation of the death of Thelma Todd, blonde screen beauty.

Pinning definite traces of carbon monoxide poisoning, the county autopsy surgeon said she probably died in her garage about 10 p. m. Sunday, after she had been driven home from a party at the Hollywood party.

But Mrs. Martha Ford, wife of Wallace Ford of the films, told police she was in a building on Hollywood Sunday afternoon over the telephone.

"I am certain it was her voice," Mrs. Ford said. "She told me: 'I'll be with you in a half hour. I'll be with you, you'll drop dead.'"

"Oh, and another thing—I went to the party," she added.

(Continued on Page Six)

### WOMAN EXECUTED; POISONED SPOUSE

Blonde Film Beauty Found Dead in Garage; Conflicting Statements Puzzle Officers Probing the Case.

Los Angeles, Dec. 17.—(AP)—A case of conflicting and mysterious circumstances controlled police today in the investigation of the death of Thelma Todd, blonde screen beauty.

Pinning definite traces of carbon monoxide poisoning, the county autopsy surgeon said she probably died in her garage about 10 p. m. Sunday, after she had been driven home from a party at the Hollywood party.

But Mrs. Martha Ford, wife of Wallace Ford of the films, told police she was in a building on Hollywood Sunday afternoon over the telephone.

"I am certain it was her voice," Mrs. Ford said. "She told me: 'I'll be with you in a half hour. I'll be with you, you'll drop dead.'"

"Oh, and another thing—I went to the party," she added.

(Continued on Page Six)

### WOMAN EXECUTED; POISONED SPOUSE

Blonde Film Beauty Found Dead in Garage; Conflicting Statements Puzzle Officers Probing the Case.

Los Angeles, Dec. 17.—(AP)—A case of conflicting and mysterious circumstances controlled police today in the investigation of the death of Thelma Todd, blonde screen beauty.

Pinning definite traces of carbon monoxide poisoning, the county autopsy surgeon said she probably died in her garage about 10 p. m. Sunday, after she had been driven home from a party at the Hollywood party.

But Mrs. Martha Ford, wife of Wallace Ford of the films, told police she was in a building on Hollywood Sunday afternoon over the telephone.

"I am certain it was her voice," Mrs. Ford said. "She told me: 'I'll be with you in a half hour. I'll be with you, you'll drop dead.'"

"Oh, and another thing—I went to the party," she added.

(Continued on Page Six)

### WOMAN EXECUTED; POISONED SPOUSE

Blonde Film Beauty Found Dead in Garage; Conflicting Statements Puzzle Officers Probing the Case.

Los Angeles, Dec. 17.—(AP)—A case of conflicting and mysterious circumstances controlled police today in the investigation of the death of Thelma Todd, blonde screen beauty.

Pinning definite traces of carbon monoxide poisoning, the county autopsy surgeon said she probably died in her garage about 10 p. m. Sunday, after she had been driven home from a party at the Hollywood party.

But Mrs. Martha Ford, wife of Wallace Ford of the films, told police she was in a building on Hollywood Sunday afternoon over the telephone.

"I am certain it was her voice," Mrs. Ford said. "She told me: 'I'll be with you in a half hour. I'll be with you, you'll drop dead.'"

"Oh, and another thing—I went to the party," she added.

(Continued on Page Six)

### WOMAN EXECUTED; POISONED SPOUSE

Blonde Film Beauty Found Dead in Garage; Conflicting Statements Puzzle Officers Probing the Case.

Los Angeles, Dec. 17.—(AP)—A case of conflicting and mysterious circumstances controlled police today in the investigation of the death of Thelma Todd, blonde screen beauty.

Pinning definite traces of carbon monoxide poisoning, the county autopsy surgeon said she probably died in her garage about 10 p. m. Sunday, after she had been driven home from a party at the Hollywood party.

But Mrs. Martha Ford, wife of Wallace Ford of the films, told police she was in a building on Hollywood Sunday afternoon over the telephone.

"I am certain it was her voice," Mrs. Ford said. "She told me: 'I'll be with you in a half hour. I'll be with you, you'll drop dead.'"

"Oh, and another thing—I went to the party," she added.

(Continued on Page Six)

# Manchester Evening Herald

MANCHESTER — A CITY OF VILLAGE CHARM

MANCHESTER, CONN., TUESDAY, DECEMBER 17, 1933. (FOURTEEN PAGES) PRICE THREE CENTS

### Children Bring Gold To II Duce

A big red apple for teacher? Not in Italy, these days! These Italian children are filing by a desk in a government bureau, bringing gold for the premier and as donations for the Fascist government to help carry on the African war.

Washington, Dec. 17.—(AP)—With the aid of robot cigarette brand, the government today passed along to tobacco smokers some handy hints on how to puff.

If a cigaret smoker wishes to get the minimum amount of nicotine, he should use moist cigarets, puff weakly, and leave a long stub.

Conversely, if he should want to get the maximum amount of nicotine, he should smoke dry cigarets, smoke vigorously, and completely.

The 19-year-old author of the vagrant who picks up a "snipe" and discards a butt of green smoke often means throwing away 60 per cent of the nicotine.

### U. S. INSTRUCTS CIG. SMOKERS

If You Wish To Avoid Nicotine Puff Weakly and Leave a Long Stub—Other Hints.

Washington, Dec. 17.—(AP)—With the aid of robot cigarette brand, the government today passed along to tobacco smokers some handy hints on how to puff.

If a cigaret smoker wishes to get the minimum amount of nicotine, he should use moist cigarets, puff weakly, and leave a long stub.

Conversely, if he should want to get the maximum amount of nicotine, he should smoke dry cigarets, smoke vigorously, and completely.

The 19-year-old author of the vagrant who picks up a "snipe" and discards a butt of green smoke often means throwing away 60 per cent of the nicotine.

### HINTS AT BREAK SOON IN MILNE KIDNAPING

Youth's Aunt Leaves Home With Federal Agent for Unknown Destination—His Watch Returned.

New York, Dec. 17.—(AP)—Milne, 4th, sped on mysterious errands in New York today as the federal agents and municipal police hunted for him and his supposed abductor.

An aunt, a brother and a nephew, the Townsend Old Age Pension plan was an issue. Vernon H. Riffe, Republican supporter of the plan, was opposed by Howard W. Cavanaugh, Democrat, who is against the plan.

In Washington, Senator McKellar (D., Tenn.) condemned the Townsend plan as the "widest, most fantastic and most devastating suggestion produced."

But Dr. F. E. Townsend, a sponsor of the move to give \$200 a month to everybody over 60, said his group would file Third Party petitions in all states.

Hoover Lashes Relief Policies

St. Louis, Dec. 17.—(AP)—Herbert Hoover's slashing attack on the New Deal relief policy before the national today is a direct blow to the centralized relief based on the "welfare" system of American men and women.

The former Republican president, attacking President Roosevelt's recent speeches, offered his proposal for a relief system in which the federal government would be limited to the relief of the unemployed, and the states would be responsible for the relief of the dependent.

His caustic indictment of the Democratic administration generally, and his relief system in particular, drew cheers and laughter from the more than 1,000 persons who heard him address the John Hay Republican Club of St. Louis and its guests.

He arrested the administration of relief needs reform "right now," he demanded a plan to "confine public works projects to the projects which meet the needs of the nation," decentralize and turn back to the states and local communities all relief not essential to the national interest, and to make permanent the national relief fund.

Political leaders commented with approval at the examples of wit and sarcasm.

(Continued on Page Two)

### WOMAN EXECUTED; POISONED SPOUSE

Blonde Film Beauty Found Dead in Garage; Conflicting Statements Puzzle Officers Probing the Case.

Los Angeles, Dec. 17.—(AP)—A case of conflicting and mysterious circumstances controlled police today in the investigation of the death of Thelma Todd, blonde screen beauty.

Pinning definite traces of carbon monoxide poisoning, the county autopsy surgeon said she probably died in her garage about 10 p. m. Sunday, after she had been driven home from a party at the Hollywood party.

But Mrs. Martha Ford, wife of Wallace Ford of the films, told police she was in a building on Hollywood Sunday afternoon over the telephone.

"I am certain it was her voice," Mrs. Ford said. "She told me: 'I'll be with you in a half hour. I'll be with you, you'll drop dead.'"

"Oh, and another thing—I went to the party," she added.

(Continued on Page Six)

### WOMAN EXECUTED; POISONED SPOUSE

Blonde Film Beauty Found Dead in Garage; Conflicting Statements Puzzle Officers Probing the Case.

Los Angeles, Dec. 17.—(AP)—A case of conflicting and mysterious circumstances controlled police today in the investigation of the death of Thelma Todd, blonde screen beauty.

Pinning definite traces of carbon monoxide poisoning, the county autopsy surgeon said she probably died in her garage about 10 p. m. Sunday, after she had been driven home from a party at the Hollywood party.

But Mrs. Martha Ford, wife of Wallace Ford of the films, told police she was in a building on Hollywood Sunday afternoon over the telephone.

"I am certain it was her voice," Mrs. Ford said. "She told me: 'I'll be with you in a half hour. I'll be with you, you'll drop dead.'"

"Oh, and another thing—I went to the party," she added.

(Continued on Page Six)

### WOMAN EXECUTED; POISONED SPOUSE

Blonde Film Beauty Found Dead in Garage; Conflicting Statements Puzzle Officers Probing the Case.

Los Angeles, Dec. 17.—(AP)—A case of conflicting and mysterious circumstances controlled police today in the investigation of the death of Thelma Todd, blonde screen beauty.

Pinning definite traces of carbon monoxide poisoning, the county autopsy surgeon said she probably died in her garage about 10 p. m. Sunday, after she had been driven home from a party at the Hollywood party.

But Mrs. Martha Ford, wife of Wallace Ford of the films, told police she was in a building on Hollywood Sunday afternoon over the telephone.

"I am certain it was her voice," Mrs. Ford said. "She told me: 'I'll be with you in a half hour. I'll be with you, you'll drop dead.'"

"Oh, and another thing—I went to the party," she added.

(Continued on Page Six)

### WOMAN EXECUTED; POISONED SPOUSE

Blonde Film Beauty Found Dead in Garage; Conflicting Statements Puzzle Officers Probing the Case.

Los Angeles, Dec. 17.—(AP)—A case of conflicting and mysterious circumstances controlled police today in the investigation of the death of Thelma Todd, blonde screen beauty.

Pinning definite traces of carbon monoxide poisoning, the county autopsy surgeon said she probably died in her garage about 10 p. m. Sunday, after she had been driven home from a party at the Hollywood party.

But Mrs. Martha Ford, wife of Wallace Ford of the films, told police she was in a building on Hollywood Sunday afternoon over the telephone.

"I am certain it was her voice," Mrs. Ford said. "She told me: 'I'll be with you in a half hour. I'll be with you, you'll drop dead.'"

"Oh, and another thing—I went to the party," she added.

(Continued on Page Six)

### WOMAN EXECUTED; POISONED SPOUSE

Blonde Film Beauty Found Dead in Garage; Conflicting Statements Puzzle Officers Probing the Case.

Los Angeles, Dec. 17.—(AP)—A case of conflicting and mysterious circumstances controlled police today in the investigation of the death of Thelma Todd, blonde screen beauty.

Pinning definite traces of carbon monoxide poisoning, the county autopsy surgeon said she probably died in her garage about 10 p. m. Sunday, after she had been driven home from a party at the Hollywood party.

But Mrs. Martha Ford, wife of Wallace Ford of the films, told police she was in a building on Hollywood Sunday afternoon over the telephone.

"I am certain it was her voice," Mrs. Ford said. "She told me: 'I'll be with you in a half hour. I'll be with you, you'll drop dead.'"

"Oh, and another thing—I went to the party," she added.

(Continued on Page Six)

### WOMAN EXECUTED; POISONED SPOUSE

Blonde Film Beauty Found Dead in Garage; Conflicting Statements Puzzle Officers Probing the Case.

Los Angeles, Dec. 17.—(AP)—A case of conflicting and mysterious circumstances controlled police today in the investigation of the death of Thelma Todd, blonde screen beauty.

Pinning definite traces of carbon monoxide poisoning, the county autopsy surgeon said she probably died in her garage about 10 p. m. Sunday, after she had been driven home from a party at the Hollywood party.

But Mrs. Martha Ford, wife of Wallace Ford of the films, told police she was in a building on Hollywood Sunday afternoon over the telephone.

"I am certain it was her voice," Mrs. Ford said. "She told me: 'I'll be with you in a half hour. I'll be with you, you'll drop dead.'



**BON ANI WORKERS TO RECEIVE BONUS**

Usual Christmas Gift of Percentage of Wages to Be Presented to Employees.

Employees of the Oxford Soap Company, manufacturers of Bon Ami, are to receive their usual Christmas present this year. For many years it has been the custom at Christmas time for the company to give each of its employees a bonus in the form of a check for a percentage of their wages for the year just closed. The bonus is to be presented to the employees on Wednesday night, Dec. 18, at 8 o'clock.

**DISPUTE OVER CONCRETE BLOCKS CAUSE OF SUIT**

Rockville Man Who Laid Blocks at New Filling Station Says Their Size Was Wrong.

As a result of a dispute as to the meaning of a contract to lay concrete blocks at the gasoline station being erected at the corner of Main and Myrtle streets, Constable James Duffy this morning attached a truck owned by the Mason Construction Company of Providence, R. I., the general contractor in a warrant issued by Attorney Donald Jones in favor of Bernard Strach of Vernon, Mr. Duffy took the contract for laying the concrete blocks at a gross figure per block. The blocks were manufactured in Massachusetts and are different in size, it is claimed, from those used in this section. When the size of the blocks was discovered, Mr. Duffy objected, claiming that it would cost more to lay them. The dispute over the proper charge resulted in the suit being brought. The Vernon man claiming \$242 and also damages of \$400. The writ, which is returnable to the City Court of Rockville on January 1, directed the constable to attach in the amount of \$500 to cover the claim and the costs and acting under this writ Mr. Duffy took possession of the truck this morning.

**DR. CAILLOUETTE BLUEFIELDS LEADER**

Named President of Club and Manager of Baseball Team for Year.

Dr. George A. Cailhouette, local chiropractor, was elected president of the Bluefields Club and manager of the baseball team for the year just closed. He is an ardent follower of sports and was one of the Bluefields loyal rosters during the past season. It was announced that the club's annual Christmas party would be held at the clubhouse on Emerson street on Saturday evening, Dec. 21, featuring a program of entertainment has been arranged by a committee headed by Al Ford as chairman and veterans will all be served. A social hour followed last night's meeting.

**NEW BOULTON LIGHTS LINE OPENS TONIGHT**

Circuit Extends East for Two Miles—Nine Families to Get Service.

A new circuit carrying power to residents in the town of Bolton from Bolton North east to the home of Mrs. Andrew Mann, owned by the Bolton Electric Company will be energized tonight. The new circuit is two miles in length and nine families have already signed to take the service. Some of these new homes already had the necessary wiring and fixtures installed in their homes and will have the service connected tonight for the first time. The new circuit which opens to service from the Bolton Electric Company, which has the charter to furnish electric service to the town of Bolton, is a continuation of the former Bolton Electric Company and the office of the company is at the Bolton Electric Company, 175 Main Street, Bolton, Conn. The new circuit will be energized tonight for the first time. The new circuit which opens to service from the Bolton Electric Company, which has the charter to furnish electric service to the town of Bolton, is a continuation of the former Bolton Electric Company and the office of the company is at the Bolton Electric Company, 175 Main Street, Bolton, Conn. The new circuit will be energized tonight for the first time.

**MANUSH IS TRADED BY THE SENATORS**

Goes to Red Sox in Outright Swap for Roy Johnson and Carl Reynolds.

The Washington Senators today traded Outfielder Heinie Manush to the Boston Red Sox for outfielders Roy Johnson and Carl Reynolds. The trade was announced by the Senators and the Red Sox. Manush, who was with the Senators since 1933, was traded to the Red Sox for Roy Johnson and Carl Reynolds. The trade was announced by the Senators and the Red Sox. Manush, who was with the Senators since 1933, was traded to the Red Sox for Roy Johnson and Carl Reynolds.

**U. S. COURT TO ACT ON CHENEY CASE**

Tax Reduction Petition Taken from Superior Court by Special Master.

Cheney Brothers petition for a field trial in the current town and ward assessment, was taken from the jurisdiction of the Superior Court and referred to the hands of the United States District Court at Hartford. The petition was filed before A. S. Albright, special master in charge of the proceedings under Section 77B of the Federal Bankruptcy Act. The petition was filed before A. S. Albright, special master in charge of the proceedings under Section 77B of the Federal Bankruptcy Act.

**CHESTER FERRIS HEADS DE MOLAY**

Degree Conferred Upon Nine Candidates at Meeting Last Night.

Chester Ferris was elected master of the Order of DeMolay at the chapter's regular semi-monthly meeting at the Masonic Temple last night, at which time also the DeMolay degree was conferred on a class of nine candidates. Other selected officers are as follows: James E. Baker, senior warden; and Lawrence Converse, junior warden. The chapter is composed of 100 members.

**PLAN TO BE AT RILEY CHEVROLET DISPLAY ROOMS, 60 WELLS ST., WEDNESDAY NIGHT, DEC. 18, 8 O'CLOCK**

Recreational Entertainment.

**Boys Prefer HIGH-TOP BOOTS for Christmas**

Illustration of a boy in high-top boots.

**Trying To Split New Deal Ranks**

Washington, Dec. 17.—(AP)—The plan to split the New Deal ranks by the support of the House of Representatives today was a subject of discussion in the House of Representatives. The plan was to split the New Deal ranks by the support of the House of Representatives.

**Appeals to Democrats**

Applying to Democrats for aid, the Republican National Committee today urged cooperation not only in the coming election and in the campaign for the office of president, but also after the victory is won and during the trying years of reconstruction. The committee urged cooperation not only in the coming election and in the campaign for the office of president, but also after the victory is won and during the trying years of reconstruction.

**OPEN FORUM IN FOUR DEATHS**

NATURE LORE.

Editor of The Herald: An interesting letter was held last Saturday by the West Side Nature Club. Members collected birds' nests and during the day they were held in some quarters. A collection of various lichens and fungi will also be added to the exhibit. An interesting discovery by Jimmy Knight proved to be one of the high points of the hike. He found a chicken burr in a stack of wood. There were a number of other interesting items. I would like to see a word to our bird feeder for the benefit of those who so generously contribute toward it.

**SLAYS FOUR MEN FOR MOCKING HIM**

(Continued from Page One)

near death. James Healey, 49, received a slight arm wound. Chief Gill, an eye witness said Layman "ran along" beside the ditch, which is about ten feet wide and ten feet deep, and began kicking out his men.

**THREAT BURNED**

Mrs. Norman, who was under medical care for a nervous breakdown, was taken to a hospital last night after she became suspicious of her husband's conduct. She was taken to a hospital last night after she became suspicious of her husband's conduct.

**KILLED BY BANDITS**

(Continued from Page One)

Revolutionary, reared in seclusion at his Havana home. Abducted as he rode along a residential street in Havana a week ago yesterday, he had been punished and sentenced to death. He was killed by bandits.

**STAND-ALONE ROOM ONLY**

Boston.—The Amherst town hall is too small to hold all the people who go to town meetings. But rather than build a larger building, Rep. Gerald Jones wants to change the form of government.

**STATE**

(Continued from Page One)

Today a wed. and Thurs. The dramatic bomb-thrower that made the island hospital a terror in the open!

**C.E. HOUSE-SON, INC.**

Double 20% Green Trading Stamps Given in All Departments All Day Wednesday.

**SHIRTS \$1.00-\$1.50**

**TOGGERY SHOP "At the Center"**

**BARGAIN DAYS**

Mahieu's offers many fine, especially selected Canned Goods at genuine money-saving prices. Canned foods are as healthy as fresh foods, so take advantage and stock up completely on the famous Krasdale items.

Krasdale Peaches, 29c  
Krasdale Fruit Cocktail, 25c  
Krasdale Bartlett Pears, largest can, 18c  
Krasdale Tender Sweet Peas, can, 15c  
Krasdale Succotash, 2 cans, 25c  
Del Miaz Niblets, 2 cans, 25c  
Chase & Sanborn's Large Coffee, lb., 24c  
My-T-Fine Desserts, all flavors, pkg., 5c  
Cut-Butte Waxed Paper, 10c rolls, 2 for 11c  
Bab-O, 2 cans, 19c  
Lux Flakes, large 25c pkg., 21c  
Cream of Wheat, large pkg., 23c  
Land O'Lakes Butter, 2 lbs., 75c  
Johnson's Glo-Coat, floor finish, pint can, 49c

**MAHIEU'S GROCERY**  
188 Spruce Street

**MAHIEU'S GROCERY**

188 Spruce Street

**MAHIEU'S GROCERY**

188 Spruce Street

**MAHIEU'S GROCERY**

188 Spruce Street

**MAHIEU'S GROCERY**

188 Spruce Street

**MAHIEU'S GROCERY**

188 Spruce Street

**MAHIEU'S GROCERY**

188 Spruce Street

**MAHIEU'S GROCERY**

188 Spruce Street

**GIFT NIGHT**

By Merchants of the Rubimow Building

FREE TICKETS WILL BE GIVEN OUT STARTING WEDNESDAY, DEC. 18th.

WINNING TICKETS WILL BE DRAWN EACH WEDNESDAY AT ONE OF THE STORES BY MRS. L. THOMP OF THE MANCHESTER EVENING HERALD.

**\$50.00 IN CASH**

AND 6 OTHER PRIZES GIVEN AWAY EACH WEEK! FREE TICKETS TO ALL!

**TEXTILE STORE**  
849 Main Street Manchester

Practical Gift Suggestions!

Handkerchiefs Ladies', Men's, and Children's 5c ea. to 95c ea.  
5-Pc. Vanity Sets 50c to \$1.98  
TOWELS Marlex and Cannon Bath and Guest With Face Cloth To Match 19c to 95c ea.  
Blankets 70c to \$2.98  
FANCY PILLOWS Wide Selection 59c-98c  
Linen and Mercer TABLE COVERS AND SETS 59c to \$9.98  
Dresses \$1.49 to \$3.75 set  
Dainty Dot Hosiery Service and Children Each Pair \$2.50 65c pr. Kingtons... 79c pr.  
Blankets 70c Double 25% Wool, \$5.98 \$1.98 to \$2.98  
Knox All Wool Blankets... \$5.00 to \$12.50  
All Wool Filled Comforters... \$8.98

**NORTON'S**

Suggests PRACTICAL GIFTS FOR CHRISTMAS For The Entire Family

Paul Jones Combination Last Shoes for Men \$4.00

Buy your Christmas gifts at Norton's and receive your chance to be a winner in our \$50.00 weekly drawings.

MAKE USE OF NORTON'S BUDGET PLAN Buy now—pay as you want. No extra charge for this service. Set your own down payment. Pay weekly according to your weekly earnings.

**POLLY PRESTON SHOES** for Women \$4.00

Norton's DeLuxe Shoes \$3.00  
Children's Shoes \$1.00 up

Hosiery - Slippers Rubbers - Gaiters Men's Hose Overnight Bags

**NORTON'S**  
847 Main Street Rubimow Bldg.

**Christmas BARGAIN SALE**

FOR LAST MINUTE SHOPPERS

**XMAS GIFTS FOR MEN**

Choose Your Gift From Our Large Stock!

Williams' Sets... 67c  
Coty's Men's Sets... \$1.00 up  
Yardley's... \$1.00 to \$10.00  
Woodbury's... 67c  
Many Others In Stock.

**WINE AND LIQUORS**

4 ROBES, pint... \$1.54  
WILKIN FAMILY... 49c  
ELK HORN WHISKY, full quart... 75c  
SCOTCH WHISKY, full fifth... \$1.89  
ALL LIQUORS PUT UP IN ATTRACTIVE XMAS GIFT BOXES!

**PAUL JONES**... pint \$1.34

WINES - All Popular Makes At Deapest Cut Prices!

**SANDY McNAB SCOTCH WHISKY**... \$2.98

**Smoke**

From **ARTHUR'S**

Means the Best At Great Savings To All!

ALL 5c CIGARS BOX OF 25... \$1.09  
CIGARS CUT TO... \$1.49  
CREMO CIGARS... 79c

WIN \$50.00 IN CASH! Free Tickets With Every 25c Purchase!

For Women Size 1 to 12 Stylish - gay Comfortable, too.

Special Free Fitting Last.

Norton's DeLuxe Shoes \$3.00  
Children's Shoes \$1.00 up

Hosiery - Slippers Rubbers - Gaiters Men's Hose Overnight Bags

**NORTON'S**  
847 Main Street Rubimow Bldg.

**We Cordially Invite You To Attend An Evening of UNUSUAL ENTERTAINMENT at the RILEY CHEVROLET Co's DISPLAY ROOMS 60 WELLS ST. Wednesday Evening, Dec. 18, At 8 O'Clock**

Many Valuable Door Prizes! Children under 14 years must be accompanied by parents.

**SHIRTS \$1.00-\$1.50**

**TOGGERY SHOP "At the Center"**

**BARGAIN DAYS**

Mahieu's offers many fine, especially selected Canned Goods at genuine money-saving prices. Canned foods are as healthy as fresh foods, so take advantage and stock up completely on the famous Krasdale items.

Krasdale Peaches, 29c  
Krasdale Fruit Cocktail, 25c  
Krasdale Bartlett Pears, largest can, 18c  
Krasdale Tender Sweet Peas, can, 15c  
Krasdale Succotash, 2 cans, 25c  
Del Miaz Niblets, 2 cans, 25c  
Chase & Sanborn's Large Coffee, lb., 24c  
My-T-Fine Desserts, all flavors, pkg., 5c  
Cut-Butte Waxed Paper, 10c rolls, 2 for 11c  
Bab-O, 2 cans, 19c  
Lux Flakes, large 25c pkg., 21c  
Cream of Wheat, large pkg., 23c  
Land O'Lakes Butter, 2 lbs., 75c  
Johnson's Glo-Coat, floor finish, pint can, 49c

**MAHIEU'S GROCERY**  
188 Spruce Street

**SHIRTS \$1.00-\$1.50**

**TOGGERY SHOP "At the Center"**

**BARGAIN DAYS**

Mahieu's offers many fine, especially selected Canned Goods at genuine money-saving prices. Canned foods are as healthy as fresh foods, so take advantage and stock up completely on the famous Krasdale items.

Krasdale Peaches, 29c  
Krasdale Fruit Cocktail, 25c  
Krasdale Bartlett Pears, largest can, 18c  
Krasdale Tender Sweet Peas, can, 15c  
Krasdale Succotash, 2 cans, 25c  
Del Miaz Niblets, 2 cans, 25c  
Chase & Sanborn's Large Coffee, lb., 24c  
My-T-Fine Desserts, all flavors, pkg., 5c  
Cut-Butte Waxed Paper, 10c rolls, 2 for 11c  
Bab-O, 2 cans, 19c  
Lux Flakes, large 25c pkg., 21c  
Cream of Wheat, large pkg., 23c  
Land O'Lakes Butter, 2 lbs., 75c  
Johnson's Glo-Coat, floor finish, pint can, 49c

**MAHIEU'S GROCERY**  
188 Spruce Street

**SHIRTS \$1.00-\$1.50**

**TOGGERY SHOP "At the Center"**

**BARGAIN DAYS**

Mahieu's offers many fine, especially selected Canned Goods at genuine money-saving prices. Canned foods are as healthy as fresh foods, so take advantage and stock up completely on the famous Krasdale items.

Krasdale Peaches, 29c  
Krasdale Fruit Cocktail, 25c  
Krasdale Bartlett Pears, largest can, 18c  
Krasdale Tender Sweet Peas, can, 15c  
Krasdale Succotash, 2 cans, 25c  
Del Miaz Niblets, 2 cans, 25c  
Chase & Sanborn's Large Coffee, lb., 24c  
My-T-Fine Desserts, all flavors, pkg., 5c  
Cut-Butte Waxed Paper, 10c rolls, 2 for 11c  
Bab-O, 2 cans, 19c  
Lux Flakes, large 25c pkg., 21c  
Cream of Wheat, large pkg., 23c  
Land O'Lakes Butter, 2 lbs., 75c  
Johnson's Glo-Coat, floor finish, pint can, 49c

**MAHIEU'S GROCERY**  
188 Spruce Street

**SHIRTS \$1.00-\$1.50**

**TOGGERY SHOP "At the Center"**

**BARGAIN DAYS**

Mahieu's offers many fine, especially selected Canned Goods at genuine money-saving prices. Canned foods are as healthy as fresh foods, so take advantage and stock up completely on the famous Krasdale items.

Krasdale Peaches, 29c  
Krasdale Fruit Cocktail, 25c  
Krasdale Bartlett Pears, largest can, 18c  
Krasdale Tender Sweet Peas, can, 15c  
Krasdale Succotash, 2 cans, 25c  
Del Miaz Niblets, 2 cans, 25c  
Chase & Sanborn's Large Coffee, lb., 24c  
My-T-Fine Desserts, all flavors, pkg., 5c  
Cut-Butte Waxed Paper, 10c rolls, 2 for 11c  
Bab-O, 2 cans, 19c  
Lux Flakes, large 25c pkg., 21c  
Cream of Wheat, large pkg., 23c  
Land O'Lakes Butter, 2 lbs., 75c  
Johnson's Glo-Coat, floor finish, pint can, 49c

**MAHIEU'S GROCERY**  
188 Spruce Street

**SHIRTS \$1.00-\$1.50**

**TOGGERY SHOP "At the Center"**

**BARGAIN DAYS**

Mahieu's offers many fine, especially selected Canned Goods at genuine money-saving prices. Canned foods are as healthy as fresh foods, so take advantage and stock up completely on the famous Krasdale items.

Krasdale Peaches, 29c  
Krasdale Fruit Cocktail, 25c  
Krasdale Bartlett Pears, largest can, 18c  
Krasdale Tender Sweet Peas, can, 15c  
Krasdale Succotash, 2 cans, 25c  
Del Miaz Niblets, 2 cans, 25c  
Chase & Sanborn's Large Coffee, lb., 24c  
My-T-Fine Desserts, all flavors, pkg., 5c  
Cut-Butte Waxed Paper, 10c rolls, 2 for 11c  
Bab-O, 2 cans, 19c  
Lux Flakes, large 25c pkg., 21c  
Cream of Wheat, large pkg., 23c  
Land O'Lakes Butter, 2 lbs., 75c  
Johnson's Glo-Coat, floor finish, pint can, 49c

**MAHIEU'S GROCERY**  
188 Spruce Street

**SHIRTS \$1.00-\$1.50**

**TOGGERY SHOP "At the Center"**

**BARGAIN DAYS**

Mahieu's offers many fine, especially selected Canned Goods at genuine money-saving prices. Canned foods are as healthy as fresh foods, so take advantage and stock up completely on the famous Krasdale items.

Krasdale Peaches, 29c  
Krasdale Fruit Cocktail, 25c  
Krasdale Bartlett Pears, largest can, 18c  
Krasdale Tender Sweet Peas, can, 15c  
Krasdale Succotash, 2 cans, 25c  
Del Miaz Niblets, 2 cans, 25c  
Chase & Sanborn's Large Coffee, lb., 24c  
My-T-Fine Desserts, all flavors, pkg., 5c  
Cut-Butte Waxed Paper, 10c rolls, 2 for 11c  
Bab-O, 2 cans, 19c  
Lux Flakes, large 25c pkg., 21c  
Cream of Wheat, large pkg., 23c  
Land O'Lakes Butter, 2 lbs., 75c  
Johnson's Glo-Coat, floor finish, pint can, 49c

**MAHIEU'S GROCERY**  
188 Spruce Street

**SHIRTS \$1.00-\$1.50**

**TOGGERY SHOP "At the Center"**

**BARGAIN DAYS**

Mahieu's offers many fine, especially selected Canned Goods at genuine money-saving prices. Canned foods are as healthy as fresh foods, so take advantage and stock up completely on the famous Krasdale items.

Krasdale Peaches, 29c  
Krasdale Fruit Cocktail, 25c  
Krasdale Bartlett Pears, largest can, 18c  
Krasdale Tender Sweet Peas, can, 15c  
Krasdale Succotash, 2 cans, 25c  
Del Miaz Niblets, 2 cans, 25c  
Chase & Sanborn's Large Coffee, lb., 24c  
My-T-Fine Desserts, all flavors, pkg., 5c  
Cut-Butte Waxed Paper, 10c rolls, 2 for 11c  
Bab-O, 2 cans, 19c  
Lux Flakes, large 25c pkg., 21c  
Cream of Wheat, large pkg., 23c  
Land O'Lakes Butter, 2 lbs., 75c  
Johnson's Glo-Coat, floor finish, pint can, 49c

**MAHIEU'S GROCERY**  
188 Spruce Street

**POPULAR MARKET**  
855 MAIN STREET RUBIMOW BUILDING

Where Economy Rules

FOLLOW THE CROWD AND SAVE A DOLLAR!

WIN \$50.00 IN CASH! FREE TICKETS WITH EVERY 25c PURCHASE!

23 <sup>lb</sup> Rib Roast	23 <sup>c</sup>	25 <sup>lb</sup> Roast	25 <sup>c</sup>
VEAL LEGS	19c lb.	LAMB FORES	12 1/2c lb.
CHOICE CHUCK ROAST	16c lb.	RIB PORK ROAST	21c lb.
23c lb. CHOICE SIRLOIN and SHORT STEAKS	lb. 23c		
LOIN LAMB CHOPS	23c lb.	RIB LAMB CHOPS	19c lb.
Shoulder LAMB CHOPS	15c lb.	LOIN VEAL CHOPS	27c lb.
NECK BONES	3 lbs. 25c	PIGS' FEET	3 lbs. 25c
SELECTED EGGS	2 doz. 51c	PURE LARD	2 lbs. 31c
TANGERINES	2 doz. 25c	FLORIDA ORANGES	18c doz. 2 for 35c.
ENDIVE	3 lbs. 25c	FRESH BULK DATES	3 lbs. 25c
SLICED BREAD	7c each	ASST. CUP CAKES	15c doz.
Vienna and Italian BREAD	7c each	ASST. SUGAR BUNS	18c doz.

**FRUIT AND BAKERY DEPARTMENT SPECIALS**

**CASH PRIZES** 1st. \$25 2nd. \$15 3rd. \$10 EACH WEEK Also 6 OTHER MDSE. PRIZES

Win \$50.00 In Cash!

Free tickets with each 25-cent purchase.

**Give Fashion Gifts From Rubimow's**

The store that features Fashions the year 'round

**A New Hat** for Christmas Advanced styles in novelty fabrics, Felts and Ribbons. \$1.95

**Gift Gloves** of suede in the new but-ton top mode in rich shade of brown. Special \$1.95

**Robes and Pajamas** of Corduroy, Flannel, Satin and the new "Prints of India". A practical gift for leisure hours. \$1.95 to \$7.95

**A Christmas Gift** She will be glad to receive WOOL FLEECE COATS with Flattering Furs of Wolf - Racoon - Lynx - in cheery shades of Red, Raspberry, Green and Blue. Sizes 14 to 20. \$24.95 and \$35.00

**Party Dresses** for the girl 12 to 16, in shimmering tulle. The one gift that will please her most. \$5.95

**Other Girls' Dresses** \$1 and up



Manchester Evening Herald
PUBLISHED BY THE HERALD PUBLISHING CO.
Subscription Rates
Retail Price 10 Cents

THAT TOWN AUDIT
The necessity of a thorough audit of the financial accounts of the town of Manchester extending back over a considerable period of years, together with the establishment of a clearly understandable system of bookkeeping covering all receipts and expenditures, has become a topic of long-continued discussion in the town meeting called after Christmas to deal with the question of the audit or postpone its manifest duty nor yet attempt to fulfil it in any partial manner. It is, of course, the duty of the town meeting, in its capacity as the highest authority, at a time like the present when the municipality is striving in every way to retrench, but this happens to be the season when the audit accounts problem has reached a climax and there is no reasonable way out but to meet the crisis with resolution and to get on with it as a right way and for good and all.

NO HELP.
Mr. Hoover was on good, safe ground when he charged in his last night's speech that relief was being administered with a heavy eye to partisan advantage, for the hand of Jim Farley has left its fingerprints all over the enormous bureaucracy that has been built up on the apparatus of the Federal Reserve Bank. The Federal Reserve Bank could have found plenty of material for a longer speech than the one he made in the House of Representatives. He could have pointed to the thousands of men, women and children who are being kept in the bread lines of the New Deal.

BEHIND THE SCENES IN WASHINGTON
By Rodney Dutfcher
Manchester Herald's Washington Correspondent
U. S. at Last Balks at Holding Back the British
Lead in Slip at Japan
Rate of Labor Drive May Improve

GRIDIRON LEAK
There is a two-gang light in connection with the Saturday night dinner at the Gridiron Club at Washington. One angle has to do with process serving. The rights and powers of a person to break first prices of the restricted and often times a person anxious to avoid service can be served for pretty quick relief. The Gridiron Club is a place where the members are not to be disturbed by the police. It is a place where the members are not to be disturbed by the police.

A RUMP LEAGUE?
There is occasion for speculation in the circumstance that some of the so-called smaller nations, members of the League of Nations, are being invited to take part in the annual meeting of the League of Nations. It is a meeting that is supposed to be a British combination that so far has been their dominating influence.

PLEASING PROSPECT
The other angle is a question—how on earth did this news ever get out? What happens at a Gridiron Club dinner is not supposed to get out at all. Why, it is a widespread superstition that even the President of the United States, who is almost always present, never gets out of it. It is a question that is being asked by newspaper folk as they are supposed to forget that they are newspaper folk.

A WORD, ANYHOW
Mr. Licks' national report will be of interest to eighth grade pupils and teachers—possibly to some students and instructors in English in high schools and even in colleges—if it is to such countries as are preparing to take up the question of the League of Nations. It is a question that is being asked by newspaper folk as they are supposed to forget that they are newspaper folk.

COMMERCIAL JOHN JOHNSON, and Post-Office Department Solicitor Karl A. Crowley.
They are trying to work out a stipend which will be presented with the Hoover administration's blessing to the next Congress.

IN NEW YORK
By GEORGE ROSS
New York, Dec. 17.—Probably the best bit of ballplay for a Broadway show was perpetrated by the late Tom Horn. He spread a Fourth Street because, he said, Mr. Campbell who was playing in a theater on that block, needed peace and quiet.

AUTHOR GOES HUNTING AND WRITES A BOOK
In "Green Hills of Africa" Ernest Hemingway tells about African Wilds With Plenty of Profanity.
There seems to be some natural law that makes books about big game hunting in Africa more popular than any other kind of literature. It begins to look as if the same law held good even when the books are written by genuine, 18-year-old boys.

WATKINS
Children's Chairs and Rockers \$1.98
WATKINS
31 MANCHESTER, CONN.

WATKINS
Children's Chairs and Rockers \$1.98
WATKINS
31 MANCHESTER, CONN.

HEALTH-DIET ADVICE
By DR. FRANK MATTI
Questions in regard to health and diet will be answered by Dr. Matti who will be on duty at each of his close stamped, self-addressed envelope for reply.

TREATMENT OF CYSTITIS
In yesterday's article, I explained some of the causes of cystitis, but now I advise you to get out of it. I am going to give a general treatment which may be used with good results.

HEALTH-DIET ADVICE
By DR. FRANK MATTI
Questions in regard to health and diet will be answered by Dr. Matti who will be on duty at each of his close stamped, self-addressed envelope for reply.

HEALTH-DIET ADVICE
By DR. FRANK MATTI
Questions in regard to health and diet will be answered by Dr. Matti who will be on duty at each of his close stamped, self-addressed envelope for reply.

HEALTH-DIET ADVICE
By DR. FRANK MATTI
Questions in regard to health and diet will be answered by Dr. Matti who will be on duty at each of his close stamped, self-addressed envelope for reply.

HEALTH-DIET ADVICE
By DR. FRANK MATTI
Questions in regard to health and diet will be answered by Dr. Matti who will be on duty at each of his close stamped, self-addressed envelope for reply.

HEALTH-DIET ADVICE
By DR. FRANK MATTI
Questions in regard to health and diet will be answered by Dr. Matti who will be on duty at each of his close stamped, self-addressed envelope for reply.

HEALTH-DIET ADVICE
By DR. FRANK MATTI
Questions in regard to health and diet will be answered by Dr. Matti who will be on duty at each of his close stamped, self-addressed envelope for reply.

HEALTH-DIET ADVICE
By DR. FRANK MATTI
Questions in regard to health and diet will be answered by Dr. Matti who will be on duty at each of his close stamped, self-addressed envelope for reply.

HEALTH-DIET ADVICE
By DR. FRANK MATTI
Questions in regard to health and diet will be answered by Dr. Matti who will be on duty at each of his close stamped, self-addressed envelope for reply.

HEALTH-DIET ADVICE
By DR. FRANK MATTI
Questions in regard to health and diet will be answered by Dr. Matti who will be on duty at each of his close stamped, self-addressed envelope for reply.

HEALTH-DIET ADVICE
By DR. FRANK MATTI
Questions in regard to health and diet will be answered by Dr. Matti who will be on duty at each of his close stamped, self-addressed envelope for reply.

HEALTH-DIET ADVICE
By DR. FRANK MATTI
Questions in regard to health and diet will be answered by Dr. Matti who will be on duty at each of his close stamped, self-addressed envelope for reply.

HEALTH-DIET ADVICE
By DR. FRANK MATTI
Questions in regard to health and diet will be answered by Dr. Matti who will be on duty at each of his close stamped, self-addressed envelope for reply.

HEALTH-DIET ADVICE
By DR. FRANK MATTI
Questions in regard to health and diet will be answered by Dr. Matti who will be on duty at each of his close stamped, self-addressed envelope for reply.

HEALTH-DIET ADVICE
By DR. FRANK MATTI
Questions in regard to health and diet will be answered by Dr. Matti who will be on duty at each of his close stamped, self-addressed envelope for reply.

HEALTH-DIET ADVICE
By DR. FRANK MATTI
Questions in regard to health and diet will be answered by Dr. Matti who will be on duty at each of his close stamped, self-addressed envelope for reply.

HEALTH-DIET ADVICE
By DR. FRANK MATTI
Questions in regard to health and diet will be answered by Dr. Matti who will be on duty at each of his close stamped, self-addressed envelope for reply.

HEALTH-DIET ADVICE
By DR. FRANK MATTI
Questions in regard to health and diet will be answered by Dr. Matti who will be on duty at each of his close stamped, self-addressed envelope for reply.

HEALTH-DIET ADVICE
By DR. FRANK MATTI
Questions in regard to health and diet will be answered by Dr. Matti who will be on duty at each of his close stamped, self-addressed envelope for reply.

HEALTH-DIET ADVICE
By DR. FRANK MATTI
Questions in regard to health and diet will be answered by Dr. Matti who will be on duty at each of his close stamped, self-addressed envelope for reply.

HEALTH-DIET ADVICE
By DR. FRANK MATTI
Questions in regard to health and diet will be answered by Dr. Matti who will be on duty at each of his close stamped, self-addressed envelope for reply.

HEALTH-DIET ADVICE
By DR. FRANK MATTI
Questions in regard to health and diet will be answered by Dr. Matti who will be on duty at each of his close stamped, self-addressed envelope for reply.

HEALTH-DIET ADVICE
By DR. FRANK MATTI
Questions in regard to health and diet will be answered by Dr. Matti who will be on duty at each of his close stamped, self-addressed envelope for reply.

HEALTH-DIET ADVICE
By DR. FRANK MATTI
Questions in regard to health and diet will be answered by Dr. Matti who will be on duty at each of his close stamped, self-addressed envelope for reply.

HEALTH-DIET ADVICE
By DR. FRANK MATTI
Questions in regard to health and diet will be answered by Dr. Matti who will be on duty at each of his close stamped, self-addressed envelope for reply.

HEALTH-DIET ADVICE
By DR. FRANK MATTI
Questions in regard to health and diet will be answered by Dr. Matti who will be on duty at each of his close stamped, self-addressed envelope for reply.

HEALTH-DIET ADVICE
By DR. FRANK MATTI
Questions in regard to health and diet will be answered by Dr. Matti who will be on duty at each of his close stamped, self-addressed envelope for reply.

HEALTH-DIET ADVICE
By DR. FRANK MATTI
Questions in regard to health and diet will be answered by Dr. Matti who will be on duty at each of his close stamped, self-addressed envelope for reply.

HEALTH-DIET ADVICE
By DR. FRANK MATTI
Questions in regard to health and diet will be answered by Dr. Matti who will be on duty at each of his close stamped, self-addressed envelope for reply.

HEALTH-DIET ADVICE
By DR. FRANK MATTI
Questions in regard to health and diet will be answered by Dr. Matti who will be on duty at each of his close stamped, self-addressed envelope for reply.

HEALTH-DIET ADVICE
By DR. FRANK MATTI
Questions in regard to health and diet will be answered by Dr. Matti who will be on duty at each of his close stamped, self-addressed envelope for reply.

HEALTH-DIET ADVICE
By DR. FRANK MATTI
Questions in regard to health and diet will be answered by Dr. Matti who will be on duty at each of his close stamped, self-addressed envelope for reply.

HEALTH-DIET ADVICE
By DR. FRANK MATTI
Questions in regard to health and diet will be answered by Dr. Matti who will be on duty at each of his close stamped, self-addressed envelope for reply.

HEALTH-DIET ADVICE
By DR. FRANK MATTI
Questions in regard to health and diet will be answered by Dr. Matti who will be on duty at each of his close stamped, self-addressed envelope for reply.

HEALTH-DIET ADVICE
By DR. FRANK MATTI
Questions in regard to health and diet will be answered by Dr. Matti who will be on duty at each of his close stamped, self-addressed envelope for reply.

HEALTH-DIET ADVICE
By DR. FRANK MATTI
Questions in regard to health and diet will be answered by Dr. Matti who will be on duty at each of his close stamped, self-addressed envelope for reply.

HEALTH-DIET ADVICE
By DR. FRANK MATTI
Questions in regard to health and diet will be answered by Dr. Matti who will be on duty at each of his close stamped, self-addressed envelope for reply.

HEALTH-DIET ADVICE
By DR. FRANK MATTI
Questions in regard to health and diet will be answered by Dr. Matti who will be on duty at each of his close stamped, self-addressed envelope for reply.

HEALTH-DIET ADVICE
By DR. FRANK MATTI
Questions in regard to health and diet will be answered by Dr. Matti who will be on duty at each of his close stamped, self-addressed envelope for reply.

HEALTH-DIET ADVICE
By DR. FRANK MATTI
Questions in regard to health and diet will be answered by Dr. Matti who will be on duty at each of his close stamped, self-addressed envelope for reply.

HEALTH-DIET ADVICE
By DR. FRANK MATTI
Questions in regard to health and diet will be answered by Dr. Matti who will be on duty at each of his close stamped, self-addressed envelope for reply.

HEALTH-DIET ADVICE
By DR. FRANK MATTI
Questions in regard to health and diet will be answered by Dr. Matti who will be on duty at each of his close stamped, self-addressed envelope for reply.

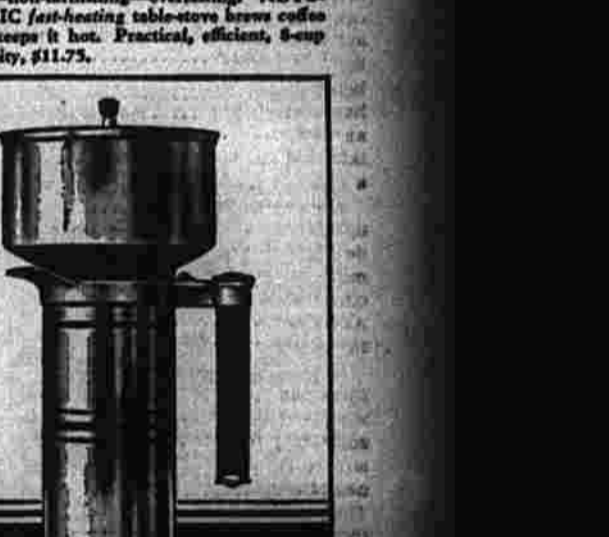
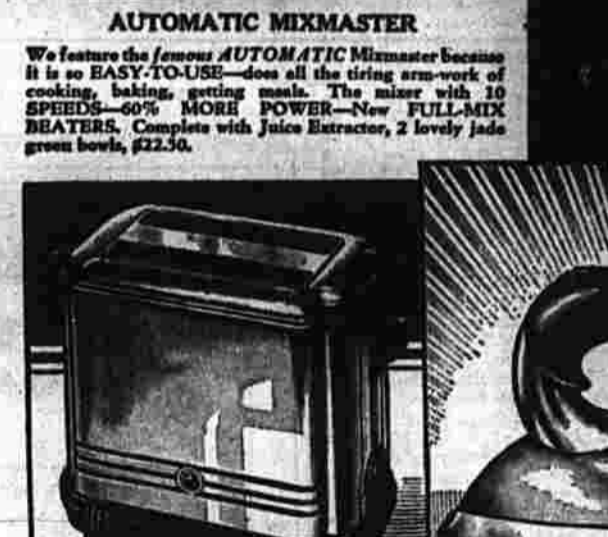
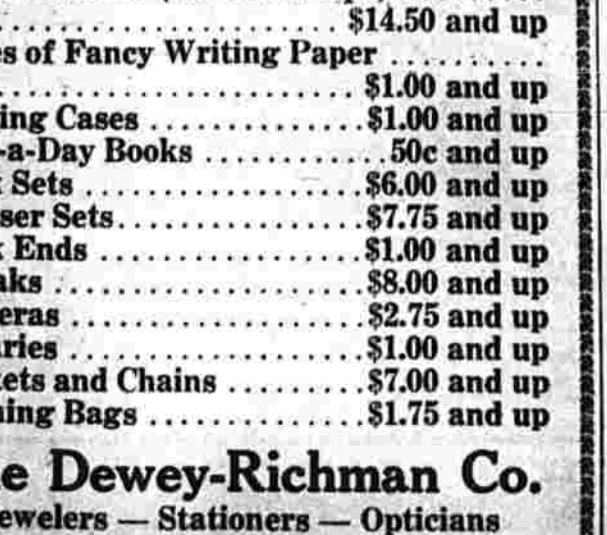
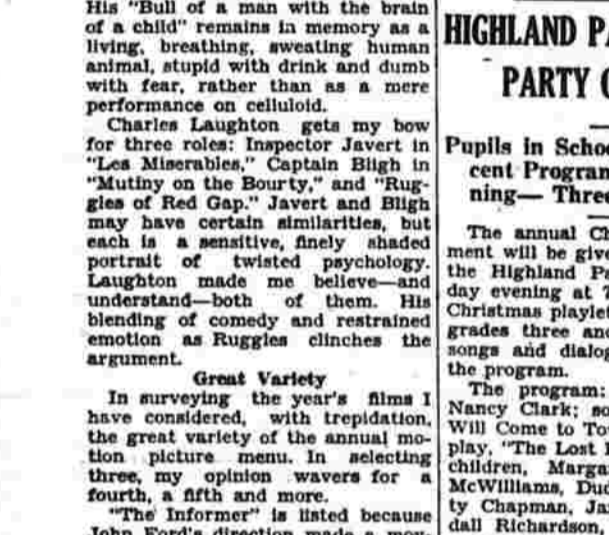
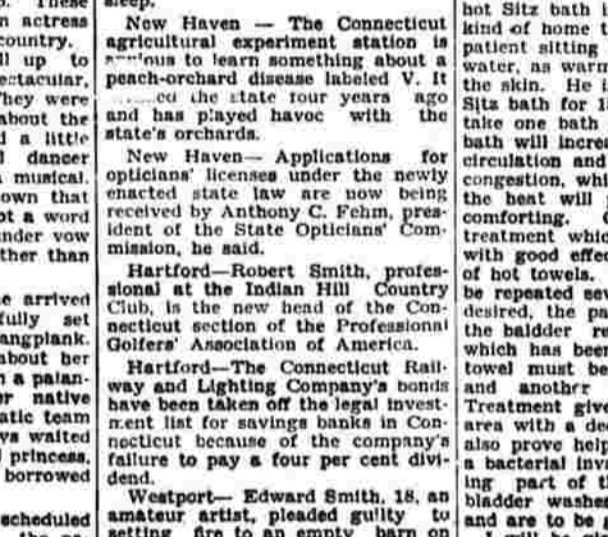
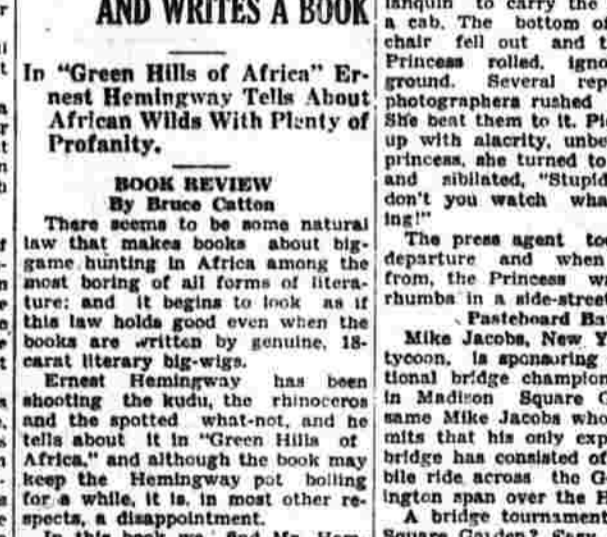
HEALTH-DIET ADVICE
By DR. FRANK MATTI
Questions in regard to health and diet will be answered by Dr. Matti who will be on duty at each of his close stamped, self-addressed envelope for reply.

HEALTH-DIET ADVICE
By DR. FRANK MATTI
Questions in regard to health and diet will be answered by Dr. Matti who will be on duty at each of his close stamped, self-addressed envelope for reply.

HEALTH-DIET ADVICE
By DR. FRANK MATTI
Questions in regard to health and diet will be answered by Dr. Matti who will be on duty at each of his close stamped, self-addressed envelope for reply.

HEALTH-DIET ADVICE
By DR. FRANK MATTI
Questions in regard to health and diet will be answered by Dr. Matti who will be on duty at each of his close stamped, self-addressed envelope for reply.

HEALTH-DIET ADVICE
By DR. FRANK MATTI
Questions in regard to health and diet will be answered by Dr. Matti who will be on duty at each of his close stamped, self-addressed envelope for reply.



WATKINS
Children's Chairs and Rockers \$1.98
WATKINS
31 MANCHESTER, CONN.

WATKINS
Children's Chairs and Rockers \$1.98
WATKINS
31 MANCHESTER, CONN.

WATKINS
Children's Chairs and Rockers \$1.98
WATKINS
31 MANCHESTER, CONN.

WATKINS
Children's Chairs and Rockers \$1.98
WATKINS
31 MANCHESTER, CONN.

WATKINS
Children's Chairs and Rockers \$1.98
WATKINS
31 MANCHESTER, CONN.

WATKINS
Children's Chairs and Rockers \$1.98
WATKINS
31 MANCHESTER, CONN.

WATKINS
Children's Chairs and Rockers \$1.98
WATKINS
31 MANCHESTER, CONN.

WATKINS
Children's Chairs and Rockers \$1.98
WATKINS
31 MANCHESTER, CONN.

HEALTH-DIET ADVICE
By DR. FRANK MATTI
Questions in regard to health and diet will be answered by Dr. Matti who will be on duty at each of his close stamped, self-addressed envelope for reply.

HEALTH-DIET ADVICE
By DR. FRANK MATTI
Questions in regard to health and diet will be answered by Dr. Matti who will be on duty at each of his close stamped, self-addressed envelope for reply.

HEALTH-DIET ADVICE
By DR. FRANK MATTI
Questions in regard to health and diet will be answered by Dr. Matti who will be on duty at each of his close stamped, self-addressed envelope for reply.

HEALTH-DIET ADVICE
By DR. FRANK MATTI
Questions in regard to health and diet will be answered by Dr. Matti who will be on duty at each of his close stamped, self-addressed envelope for reply.

HEALTH-DIET ADVICE
By DR. FRANK MATTI
Questions in regard to health and diet will be answered by Dr. Matti who will be on duty at each of his close stamped, self-addressed envelope for reply.

HEALTH-DIET ADVICE
By DR. FRANK MATTI
Questions in regard to health and diet will be answered by Dr. Matti who will be on duty at each of his close stamped, self-addressed envelope for reply.

HEALTH-DIET ADVICE
By DR. FRANK MATTI
Questions in regard to health and diet will be answered by Dr. Matti who will be on duty at each of his close stamped, self-addressed envelope for reply.

HEALTH-DIET ADVICE
By DR. FRANK MATTI
Questions in regard to health and diet will be answered by Dr. Matti who will be on duty at each of his close stamped, self-addressed envelope for reply.

HEALTH-DIET ADVICE
By DR. FRANK MATTI
Questions in regard to health and diet will be answered by Dr. Matti who will be on duty at each of his close stamped, self-addressed envelope for reply.

HEALTH-DIET ADVICE
By DR. FRANK MATTI
Questions in regard to health and diet will be answered by Dr. Matti who will be on duty at each of his close stamped, self-addressed envelope for reply.

HEALTH-DIET ADVICE
By DR. FRANK MATTI
Questions in regard to health and diet will be answered by Dr. Matti who will be on duty at each of his close stamped, self-addressed envelope for reply.

HEALTH-DIET ADVICE
By DR. FRANK MATTI
Questions in regard to health and diet will be answered by Dr. Matti who will be on duty at each of his close stamped, self-addressed envelope for reply.

HEALTH-DIET ADVICE
By DR. FRANK MATTI
Questions in regard to health and diet will be answered by Dr. Matti who will be on duty at each of his close stamped, self-addressed envelope for reply.

HEALTH-DIET ADVICE
By DR. FRANK MATTI
Questions in regard to health and diet will be answered by Dr. Matti who will be on duty at each of his close stamped, self-addressed envelope for reply.

HEALTH-DIET ADVICE
By DR. FRANK MATTI
Questions in regard to health and diet will be answered by Dr. Matti who will be on duty at each of his close stamped, self-addressed envelope for reply.

HEALTH-DIET ADVICE
By DR. FRANK MATTI
Questions in regard to health and diet will be answered by Dr. Matti who will be on duty at each of his close stamped, self-addressed envelope for reply.

HEALTH-DIET ADVICE
By DR. FRANK MATTI
Questions in regard to health and diet will be answered by Dr. Matti who will be on duty at each of his close stamped, self-addressed envelope for reply.

HEALTH-DIET ADVICE
By DR. FRANK MATTI
Questions in regard to health and diet will be answered by Dr. Matti who will be on duty at each of his close stamped, self-addressed envelope for reply.

HEALTH-DIET ADVICE
By DR. FRANK MATTI
Questions in regard to health and diet will be answered by Dr. Matti who will be on duty at each of his close stamped, self-addressed envelope for reply.

HEALTH-DIET ADVICE
By DR. FRANK MATTI
Questions in regard to health and diet will be answered by Dr. Matti who will be on duty at each of his close stamped, self-addressed envelope for reply.

HEALTH-DIET ADVICE
By DR. FRANK MATTI
Questions in regard to health and diet will be answered by Dr. Matti who will be on duty at each of his close stamped, self-addressed envelope for reply.

HEALTH-DIET ADVICE
By DR. FRANK MATTI
Questions in regard to health and diet will be answered by Dr. Matti who will be on duty at each of his close stamped, self-addressed envelope for reply.

HEALTH-DIET ADVICE
By DR. FRANK MATTI
Questions in regard to health and diet will be answered by Dr. Matti who will be on duty at each of his close stamped, self-addressed envelope for reply.

HEALTH-DIET ADVICE
By DR. FRANK MATTI
Questions in regard to health and diet will be answered by Dr. Matti who will be on duty at each of his close stamped, self-addressed envelope for reply.

HEALTH-DIET ADVICE
By DR. FRANK MATTI
Questions in regard to health and diet will be answered by Dr. Matti who will be on duty at each of his close stamped, self-addressed envelope for reply.

HEALTH-DIET ADVICE
By DR. FRANK MATTI
Questions in regard to health and diet will be answered by Dr. Matti who will be on duty at each of his close stamped, self-addressed envelope for reply.

HEALTH-DIET ADVICE
By DR. FRANK MATTI
Questions in regard to health and diet will be answered by Dr. Matti who will be on duty at each of his close stamped, self-addressed envelope for reply.

HEALTH-DIET ADVICE
By DR. FRANK MATTI
Questions in regard to health and diet will be answered by Dr. Matti who will be on duty at each of his close stamped, self-addressed envelope for reply.

HEALTH-DIET ADVICE
By DR. FRANK MATTI
Questions in regard to health and diet will be answered by Dr. Matti who will be on duty at each of his close stamped, self-addressed envelope for reply.

HEALTH-DIET ADVICE
By DR. FRANK MATTI
Questions in regard to health and diet will be answered by Dr. Matti who will be on duty at each of his close stamped, self-addressed envelope for reply.

HEALTH-DIET ADVICE
By DR. FRANK MATTI
Questions in regard to health and diet will be answered by Dr. Matti who will be on duty at each of his close stamped, self-addressed envelope for reply.

HEALTH-DIET ADVICE
By DR. FRANK MATTI
Questions in regard to health and diet will be answered by Dr. Matti who will be on duty at each of his close stamped, self-addressed envelope for reply.

HEALTH-DIET ADVICE
By DR. FRANK MATTI
Questions in regard to health and diet will be answered by Dr. Matti who will be on duty at each of his close stamped, self-addressed envelope for reply.

HEALTH-DIET ADVICE
By DR. FRANK MATTI
Questions in regard to health and diet will be answered by Dr. Matti who will be on duty at each of his close stamped, self-addressed envelope for reply.

HEALTH-DIET ADVICE
By DR. FRANK MATTI
Questions in regard to health and diet will be answered by Dr. Matti who will be on duty at each of his close stamped, self-addressed envelope for reply.

HEALTH-DIET ADVICE
By DR. FRANK MATTI
Questions in regard to health and diet will be answered by Dr. Matti who will be on duty at each of his close stamped, self-addressed envelope for reply.

HEALTH-DIET ADVICE
By DR. FRANK MATTI
Questions in regard to health and diet will be answered by Dr. Matti who will be on duty at each of his close stamped, self-addressed envelope for reply.

HEALTH-DIET ADVICE
By DR. FRANK MATTI
Questions in regard to health and diet will be answered by Dr. Matti who will be on duty at each of his close stamped, self-addressed envelope for reply.

HEALTH-DIET ADVICE
By DR. FRANK MATTI
Questions in regard to health and diet will be answered by Dr. Matti who will be on duty at each of his close stamped, self-addressed envelope for reply.

HEALTH-DIET ADVICE
By DR. FRANK MATTI
Questions in regard to health and diet will be answered by Dr. Matti who will be on duty at each of his close stamped, self-addressed envelope for reply.

HEALTH-DIET ADVICE
By DR. FRANK MATTI
Questions in regard to health and diet will be answered by Dr. Matti who will be on duty at each of his close stamped, self-addressed envelope for reply.

HEALTH-DIET ADVICE
By DR. FRANK MATTI
Questions in regard to health and diet will be answered by Dr. Matti who will be on duty at each of his close stamped, self-addressed envelope for reply.

HEALTH-DIET ADVICE
By DR. FRANK MATTI
Questions in regard to health and diet will be answered by Dr. Matti who will be on duty at each of his close stamped, self-addressed envelope for reply.

HEALTH-DIET ADVICE
By DR. FRANK MATTI
Questions in regard to health and diet will be answered by Dr. Matti who will be on duty at each of his close stamped, self-addressed envelope for reply.

HEALTH-DIET ADVICE
By DR. FRANK MATTI
Questions in regard to health and diet will be answered by Dr. Matti who will be on duty at each of his close stamped, self-addressed envelope for reply.

HEALTH-DIET ADVICE
By DR. FRANK MATTI
Questions in regard to health and diet will be answered by Dr. Matti who will be on duty at each of his close stamped, self-addressed envelope for reply.

HEALTH-DIET ADVICE
By DR. FRANK MATTI
Questions in regard to health and diet will be answered by Dr. Matti who will be on duty at each of his close stamped, self-addressed envelope for reply.

HEALTH-DIET ADVICE
By DR. FRANK MATTI
Questions in regard to health and diet will be answered by Dr. Matti who will be on duty at each of his close stamped, self-addressed envelope for reply.

HEALTH-DIET ADVICE
By DR. FRANK MATTI
Questions in regard to health and diet will be answered by Dr. Matti who will be on duty at each of his close stamped, self-addressed envelope for reply.

HEALTH-DIET ADVICE
By DR. FRANK MATTI
Questions in regard to health and diet will be answered by Dr. Matti who will be on duty at each of his close stamped, self-addressed envelope for reply.

HEALTH-DIET ADVICE
By DR. FRANK MATTI
Questions in regard to health and diet will be answered by Dr. Matti who will be on duty at each of his close stamped, self-addressed envelope for reply.

HEALTH-DIET ADVICE







TOWN PAYS 377 BILLS AT TOTAL OF \$29,157.18

The settlement Friday night authorized Treasurer George H. Waddell to pay 377 bills incurred during October and November totaling \$29,157.18. It was the first time during the first three months of the year that bills were paid in full.

Expenditures approved ranged from 21 cents to the Alling Rubber company for rubber to Manchester Electric company for electric lights. The next four largest bills were A. and P. groceries, \$1,475.71; Manchester hospital, \$1,150.91; J. P. O'Connell, painter and supplies, \$1,100.91; and the bills ordered paid were as follows:

Table listing various bills and their amounts, including items like 'Alling Rubber company, rubber', 'Manchester Electric company, electric lights', 'Manchester hospital', etc.

Table listing various bills and their amounts, including items like 'Kittling, Adolph, rent', 'Kittling, Mrs. Rebecca, rent', 'Kittling, Mrs. Augusta, rent', etc.

Table listing various bills and their amounts, including items like 'Wright, Clifford, electric helper', 'Wright, E. A., rent', 'Wright, Mrs. Rebecca, rent', etc.

Table listing various bills and their amounts, including items like 'Wright, Clifford, electric helper', 'Wright, E. A., rent', 'Wright, Mrs. Rebecca, rent', etc.

DAILY RADIO PROGRAM. TUESDAY, DECEMBER 17 (Central and Eastern Standard Time). Includes sections for WTIC, WDRG, and WRC.

TOWN ADVERTISEMENT. AN AMENDMENT TO AN ORDINANCE RELATING TO FEES FOR PLUMBING WORK. Includes sections for 'AN AMENDMENT TO AN ORDINANCE RELATING TO FEES FOR PLUMBING WORK' and 'AN ORDINANCE RELATING TO FEES FOR PLUMBING WORK'.

ADVERTISEMENTS. Includes various small advertisements for services and products.

ADVERTISEMENTS. Includes various small advertisements for services and products.

ADVERTISEMENTS. Includes various small advertisements for services and products.



PROJECTS IN PROGRESS NOW IN MANCHESTER

Waddell reports 279 On Payroll Now, These Employed Will Bring Federal Fund of \$349,000 Here.

The work creation projects of the Works Progress administration on which persons are now being employed in Manchester are: Sanitary sewer in Riverside drive and Wells street; clearing Center Street; painting schools; clearing water sheds of the water works; repairing reservoir; improving dirt roads; repairing bridges for sanitary purposes; and painting schools.

Projects approved by the Washington headquarters of the WPA are: extending water main along Vernon street and trimming trees; painting schools; and the construction of two display cabinets in the Municipal building and painting No. 3 and No. 4 fire houses of the South Manchester Fire district.

Projects for constructing a storm water sewer in Oak street, repairing the sewer in the town of South Manchester, and painting town hall, are also being carried out.

Projects slated to be started in the near future include painting the exterior of the hospital, extending the land records of the town, surveying a possible route for connecting the Manchester and South Manchester water works, and the construction of an addition to the town garage, repairing sidewalk along the Jarvis tract near Walker street.

The project to supply labor for the WPA is being continued as an FEPA project and is being carried on by the WPA.

William Waddell, majority member of the House of Representatives, reports that the WPA is now employing 279 persons in Manchester.

The project to supply labor for the WPA is being continued as an FEPA project and is being carried on by the WPA.

Projects slated to be started in the near future include painting the exterior of the hospital, extending the land records of the town, surveying a possible route for connecting the Manchester and South Manchester water works, and the construction of an addition to the town garage, repairing sidewalk along the Jarvis tract near Walker street.

The project to supply labor for the WPA is being continued as an FEPA project and is being carried on by the WPA.

Projects slated to be started in the near future include painting the exterior of the hospital, extending the land records of the town, surveying a possible route for connecting the Manchester and South Manchester water works, and the construction of an addition to the town garage, repairing sidewalk along the Jarvis tract near Walker street.

The project to supply labor for the WPA is being continued as an FEPA project and is being carried on by the WPA.

Projects slated to be started in the near future include painting the exterior of the hospital, extending the land records of the town, surveying a possible route for connecting the Manchester and South Manchester water works, and the construction of an addition to the town garage, repairing sidewalk along the Jarvis tract near Walker street.

The project to supply labor for the WPA is being continued as an FEPA project and is being carried on by the WPA.

Projects slated to be started in the near future include painting the exterior of the hospital, extending the land records of the town, surveying a possible route for connecting the Manchester and South Manchester water works, and the construction of an addition to the town garage, repairing sidewalk along the Jarvis tract near Walker street.

The project to supply labor for the WPA is being continued as an FEPA project and is being carried on by the WPA.

Projects slated to be started in the near future include painting the exterior of the hospital, extending the land records of the town, surveying a possible route for connecting the Manchester and South Manchester water works, and the construction of an addition to the town garage, repairing sidewalk along the Jarvis tract near Walker street.

High School Choruses To Be Heard In Concert Tonight

The annual Christmas concert and carol sing of Manchester High School choruses and orchestra will be presented tonight at 8 o'clock at the high school auditorium, under the direction of G. Albert Pedron.

No admission will be charged but a company of "Chairs" will be provided for the choir and orchestra. The concert will be held at 8 o'clock at the high school auditorium.

The annual Christmas concert and carol sing of Manchester High School choruses and orchestra will be presented tonight at 8 o'clock at the high school auditorium.

The annual Christmas concert and carol sing of Manchester High School choruses and orchestra will be presented tonight at 8 o'clock at the high school auditorium.

The annual Christmas concert and carol sing of Manchester High School choruses and orchestra will be presented tonight at 8 o'clock at the high school auditorium.

The annual Christmas concert and carol sing of Manchester High School choruses and orchestra will be presented tonight at 8 o'clock at the high school auditorium.

The annual Christmas concert and carol sing of Manchester High School choruses and orchestra will be presented tonight at 8 o'clock at the high school auditorium.

The annual Christmas concert and carol sing of Manchester High School choruses and orchestra will be presented tonight at 8 o'clock at the high school auditorium.

The annual Christmas concert and carol sing of Manchester High School choruses and orchestra will be presented tonight at 8 o'clock at the high school auditorium.

The annual Christmas concert and carol sing of Manchester High School choruses and orchestra will be presented tonight at 8 o'clock at the high school auditorium.

The annual Christmas concert and carol sing of Manchester High School choruses and orchestra will be presented tonight at 8 o'clock at the high school auditorium.

The annual Christmas concert and carol sing of Manchester High School choruses and orchestra will be presented tonight at 8 o'clock at the high school auditorium.

The annual Christmas concert and carol sing of Manchester High School choruses and orchestra will be presented tonight at 8 o'clock at the high school auditorium.

The annual Christmas concert and carol sing of Manchester High School choruses and orchestra will be presented tonight at 8 o'clock at the high school auditorium.

The annual Christmas concert and carol sing of Manchester High School choruses and orchestra will be presented tonight at 8 o'clock at the high school auditorium.

The annual Christmas concert and carol sing of Manchester High School choruses and orchestra will be presented tonight at 8 o'clock at the high school auditorium.

The annual Christmas concert and carol sing of Manchester High School choruses and orchestra will be presented tonight at 8 o'clock at the high school auditorium.

MOTHERS CLUB HEARS WADDELL TO DETAIL TOWN'S FINANCES

Group of 27 Boys and Girls from American Institute in Hartford in Demonstration.

The mothers club heard a detailed account of the town's finances by Waddell.

The mothers club heard a detailed account of the town's finances by Waddell.

The mothers club heard a detailed account of the town's finances by Waddell.

The mothers club heard a detailed account of the town's finances by Waddell.

The mothers club heard a detailed account of the town's finances by Waddell.

The mothers club heard a detailed account of the town's finances by Waddell.

The mothers club heard a detailed account of the town's finances by Waddell.

The mothers club heard a detailed account of the town's finances by Waddell.

The mothers club heard a detailed account of the town's finances by Waddell.

The mothers club heard a detailed account of the town's finances by Waddell.

The mothers club heard a detailed account of the town's finances by Waddell.

The mothers club heard a detailed account of the town's finances by Waddell.

The mothers club heard a detailed account of the town's finances by Waddell.

The mothers club heard a detailed account of the town's finances by Waddell.

The mothers club heard a detailed account of the town's finances by Waddell.

The mothers club heard a detailed account of the town's finances by Waddell.

HELEN WILLS MOODY RANKED AS BEST OF WOMEN ATHLETES

WIN AT WIMBLEDON BRINGS TOP PLACE TO TENNIS PLAYER

Polled 136 Votes in A. P. Survey to 76 for Nearest Rival, Mrs. Vare, Golfer; Young Mermaid Third.

By ALAN GOULD Associated Press Staff Writer

New York, Dec. 17.—(AP)—For her remarkable comeback in Wimbledon which won her the championship for the seventh time, Helen Wills Moody is ranked as the best of women athletes by the fifth annual Associated Press poll.

Tabulation today of votes cast by sports fans in the country showed Mrs. Moody far in the lead over rival Mrs. Vare, who ranked second.

James C. Connelly, of Hartford, given top priority in Pursue by Group of Friends.

James C. Connelly, of Hartford, given top priority in Pursue by Group of Friends.

James C. Connelly, of Hartford, given top priority in Pursue by Group of Friends.

James C. Connelly, of Hartford, given top priority in Pursue by Group of Friends.

James C. Connelly, of Hartford, given top priority in Pursue by Group of Friends.

James C. Connelly, of Hartford, given top priority in Pursue by Group of Friends.

James C. Connelly, of Hartford, given top priority in Pursue by Group of Friends.

James C. Connelly, of Hartford, given top priority in Pursue by Group of Friends.

James C. Connelly, of Hartford, given top priority in Pursue by Group of Friends.

James C. Connelly, of Hartford, given top priority in Pursue by Group of Friends.

James C. Connelly, of Hartford, given top priority in Pursue by Group of Friends.

James C. Connelly, of Hartford, given top priority in Pursue by Group of Friends.

Mustangs, Gophers, Tigers Lead Parade Of Eight Unbeaten Teams

By PAUL MCKELSON (Associated Press Sports Writer)

Mustangs, Gophers, Tigers Lead Parade Of Eight Unbeaten Teams

Mustangs, Gophers, Tigers Lead Parade Of Eight Unbeaten Teams

Mustangs, Gophers, Tigers Lead Parade Of Eight Unbeaten Teams

Mustangs, Gophers, Tigers Lead Parade Of Eight Unbeaten Teams

Mustangs, Gophers, Tigers Lead Parade Of Eight Unbeaten Teams

Mustangs, Gophers, Tigers Lead Parade Of Eight Unbeaten Teams

Mustangs, Gophers, Tigers Lead Parade Of Eight Unbeaten Teams

Mustangs, Gophers, Tigers Lead Parade Of Eight Unbeaten Teams

Mustangs, Gophers, Tigers Lead Parade Of Eight Unbeaten Teams

Mustangs, Gophers, Tigers Lead Parade Of Eight Unbeaten Teams

Mustangs, Gophers, Tigers Lead Parade Of Eight Unbeaten Teams

Mustangs, Gophers, Tigers Lead Parade Of Eight Unbeaten Teams

Mustangs, Gophers, Tigers Lead Parade Of Eight Unbeaten Teams

Mustangs, Gophers, Tigers Lead Parade Of Eight Unbeaten Teams

Mustangs, Gophers, Tigers Lead Parade Of Eight Unbeaten Teams

Mustangs, Gophers, Tigers Lead Parade Of Eight Unbeaten Teams

CAVALCADE TO ATTEMPT COMEBACK IN \$100,000 SANTA ANITA HANDICAP

Reigning 3-year Old of 1933 Leaves This Week for California; Is Fully Recovered from Ailments; Psychic Bid Also Entered.

Reigning 3-year Old of 1933 Leaves This Week for California; Is Fully Recovered from Ailments; Psychic Bid Also Entered.

Reigning 3-year Old of 1933 Leaves This Week for California; Is Fully Recovered from Ailments; Psychic Bid Also Entered.

Reigning 3-year Old of 1933 Leaves This Week for California; Is Fully Recovered from Ailments; Psychic Bid Also Entered.

Reigning 3-year Old of 1933 Leaves This Week for California; Is Fully Recovered from Ailments; Psychic Bid Also Entered.

Reigning 3-year Old of 1933 Leaves This Week for California; Is Fully Recovered from Ailments; Psychic Bid Also Entered.

Reigning 3-year Old of 1933 Leaves This Week for California; Is Fully Recovered from Ailments; Psychic Bid Also Entered.

Reigning 3-year Old of 1933 Leaves This Week for California; Is Fully Recovered from Ailments; Psychic Bid Also Entered.

Reigning 3-year Old of 1933 Leaves This Week for California; Is Fully Recovered from Ailments; Psychic Bid Also Entered.

Reigning 3-year Old of 1933 Leaves This Week for California; Is Fully Recovered from Ailments; Psychic Bid Also Entered.

Reigning 3-year Old of 1933 Leaves This Week for California; Is Fully Recovered from Ailments; Psychic Bid Also Entered.

Reigning 3-year Old of 1933 Leaves This Week for California; Is Fully Recovered from Ailments; Psychic Bid Also Entered.

Reigning 3-year Old of 1933 Leaves This Week for California; Is Fully Recovered from Ailments; Psychic Bid Also Entered.

Reigning 3-year Old of 1933 Leaves This Week for California; Is Fully Recovered from Ailments; Psychic Bid Also Entered.

Reigning 3-year Old of 1933 Leaves This Week for California; Is Fully Recovered from Ailments; Psychic Bid Also Entered.

Reigning 3-year Old of 1933 Leaves This Week for California; Is Fully Recovered from Ailments; Psychic Bid Also Entered.

Reigning 3-year Old of 1933 Leaves This Week for California; Is Fully Recovered from Ailments; Psychic Bid Also Entered.

RYDSON SCORES 7 POINTS IN A WEEK

Ranger Sub Makes Best Gain in Hockey League; Thompson Still On Top.

Ranger Sub Makes Best Gain in Hockey League; Thompson Still On Top.

Ranger Sub Makes Best Gain in Hockey League; Thompson Still On Top.

Ranger Sub Makes Best Gain in Hockey League; Thompson Still On Top.

Ranger Sub Makes Best Gain in Hockey League; Thompson Still On Top.

Ranger Sub Makes Best Gain in Hockey League; Thompson Still On Top.

Ranger Sub Makes Best Gain in Hockey League; Thompson Still On Top.

Ranger Sub Makes Best Gain in Hockey League; Thompson Still On Top.

Ranger Sub Makes Best Gain in Hockey League; Thompson Still On Top.

Ranger Sub Makes Best Gain in Hockey League; Thompson Still On Top.

Ranger Sub Makes Best Gain in Hockey League; Thompson Still On Top.

Ranger Sub Makes Best Gain in Hockey League; Thompson Still On Top.

Ranger Sub Makes Best Gain in Hockey League; Thompson Still On Top.

Ranger Sub Makes Best Gain in Hockey League; Thompson Still On Top.

Ranger Sub Makes Best Gain in Hockey League; Thompson Still On Top.

Ranger Sub Makes Best Gain in Hockey League; Thompson Still On Top.

Ranger Sub Makes Best Gain in Hockey League; Thompson Still On Top.

6 MANCHESTER BOYS BORN ON CHRISTMAS

No Girls Born Christmas Day in Manchester Last Ten Years Says the Records.

Six Manchester boys, William D. O'Neil, 86 Summit street, Stephen D. Wright, 100 Union street, Raymond S. Stander, 410 North Main street, Ronald S. Buckmaster, Bigelow street, John F. McCavanaugh, 100 North Main street, and Santa Claus street will greet Santa Claus on their natal day, December 25th.

Stephen O'Neil and William Wright will be one year older on Christmas day, Stanley Stander will be two years old, Ronald Buckmaster, John F. McCavanaugh will be nine, five, Frank Hurdock, seven, and John P. Cavagnoli will be nine.

Records show that no girls were born in the town of Manchester on Christmas day in the last ten years, according to the official records.

Records show that no girls were born in the town of Manchester on Christmas day in the last ten years, according to the official records.

Records show that no girls were born in the town of Manchester on Christmas day in the last ten years, according to the official records.

Records show that no girls were born in the town of Manchester on Christmas day in the last ten years, according to the official records.

Records show that no girls were born in the town of Manchester on Christmas day in the last ten years, according to the official records.

Records show that no girls were born in the town of Manchester on Christmas day in the last ten years, according to the official records.

Records show that no girls were born in the town of Manchester on Christmas day in the last ten years, according to the official records.

Records show that no girls were born in the town of Manchester on Christmas day in the last ten years, according to the official records.

Records show that no girls were born in the town of Manchester on Christmas day in the last ten years, according to the official records.

Records show that no girls were born in the town of Manchester on Christmas day in the last ten years, according to the official records.

Records show that no girls were born in the town of Manchester on Christmas day in the last ten years, according to the official records.

Records show that no girls were born in the town of Manchester on Christmas day in the last ten years, according to the official records.

Records show that no girls were born in the town of Manchester on Christmas day in the last ten years, according to the official records.

Records show that no girls were born in the town of Manchester on Christmas day in the last ten years, according to the official records.

FORM MAJORITY DE MOLAY CLUB

New Group Organizes and Names Council in Honor of William "Dad" Walsh.

Mary Bunnell Cheney Auxiliary, U. S. W. V. will give a Christmas party tomorrow night at 7 o'clock in the State Armory.

Mary Bunnell Cheney Auxiliary, U. S. W. V. will give a Christmas party tomorrow night at 7 o'clock in the State Armory.

Mary Bunnell Cheney Auxiliary, U. S. W. V. will give a Christmas party tomorrow night at 7 o'clock in the State Armory.

Mary Bunnell Cheney Auxiliary, U. S. W. V. will give a Christmas party tomorrow night at 7 o'clock in the State Armory.

Mary Bunnell Cheney Auxiliary, U. S. W. V. will give a Christmas party tomorrow night at 7 o'clock in the State Armory.

Mary Bunnell Cheney Auxiliary, U. S. W. V. will give a Christmas party tomorrow night at 7 o'clock in the State Armory.

Mary Bunnell Cheney Auxiliary, U. S. W. V. will give a Christmas party tomorrow night at 7 o'clock in the State Armory.

Mary Bunnell Cheney Auxiliary, U. S. W. V. will give a Christmas party tomorrow night at 7 o'clock in the State Armory.

Mary Bunnell Cheney Auxiliary, U. S. W. V. will give a Christmas party tomorrow night at 7 o'clock in the State Armory.

Mary Bunnell Cheney Auxiliary, U. S. W. V. will give a Christmas party tomorrow night at 7 o'clock in the State Armory.

Mary Bunnell Cheney Auxiliary, U. S. W. V. will give a Christmas party tomorrow night at 7 o'clock in the State Armory.

Mary Bunnell Cheney Auxiliary, U. S. W. V. will give a Christmas party tomorrow night at 7 o'clock in the State Armory.

Mary Bunnell Cheney Auxiliary, U. S. W. V. will give a Christmas party tomorrow night at 7 o'clock in the State Armory.

Mary Bunnell Cheney Auxiliary, U. S. W. V. will give a Christmas party tomorrow night at 7 o'clock in the State Armory.

Mary Bunnell Cheney Auxiliary, U. S. W. V. will give a Christmas party tomorrow night at 7 o'clock in the State Armory.

Mary Bunnell Cheney Auxiliary, U. S. W. V. will give a Christmas party tomorrow night at 7 o'clock in the State Armory.

MASONS TO INSTALL OFFICERS TONIGHT

C. Leroy Norris to Become Master—R. W. Goslee Installing Officer.

A meeting of the committee in charge of the annual reunion and dance to be held at the high school next week Friday will be held tomorrow afternoon with Mrs. Harry Ryland of 27 Grove street.

A meeting of the committee in charge of the annual reunion and dance to be held at the high school next week Friday will be held tomorrow afternoon with Mrs. Harry Ryland of 27 Grove street.

A meeting of the committee in charge of the annual reunion and dance to be held at the high school next week Friday will be held tomorrow afternoon with Mrs. Harry Ryland of 27 Grove street.

A meeting of the committee in charge of the annual reunion and dance to be held at the high school next week Friday will be held tomorrow afternoon with Mrs. Harry Ryland of 27 Grove street.

A meeting of the committee in charge of the annual reunion and dance to be held at the high school next week Friday will be held tomorrow afternoon with Mrs. Harry Ryland of 27 Grove street.

A meeting of the committee in charge of the annual reunion and dance to be held at the high school next week Friday will be held tomorrow afternoon with Mrs. Harry Ryland of 27 Grove street.

A meeting of the committee in charge of the annual reunion and dance to be held at the high school next week Friday will be held tomorrow afternoon with Mrs. Harry Ryland of 27 Grove street.

A meeting of the committee in charge of the annual reunion and dance to be held at the high school next week Friday will be held tomorrow afternoon with Mrs. Harry Ryland of 27 Grove street.

A meeting of the committee in charge of the annual reunion and dance to be held at the high school next week Friday will be held tomorrow afternoon with Mrs. Harry Ryland of 27 Grove street.

A meeting of the committee in charge of the annual reunion and dance to be held at the high school next week Friday will be held tomorrow afternoon with Mrs. Harry Ryland of 27 Grove street.

A meeting of the committee in charge of the annual reunion and dance to be held at the high school next week Friday will be held tomorrow afternoon with Mrs. Harry Ryland of 27 Grove street.

A meeting of the committee in charge of the annual reunion and dance to be held at the high school next week Friday will be held tomorrow afternoon with Mrs. Harry Ryland of 27 Grove street.

A meeting of the committee in charge of the annual reunion and dance to be held at the high school next week Friday will be held tomorrow afternoon with Mrs. Harry Ryland of 27 Grove street.

A meeting of the committee in charge of the annual reunion and dance to be held at the high school next week Friday will be held tomorrow afternoon with Mrs. Harry Ryland of 27 Grove street.

A meeting of the committee in charge of the annual reunion and dance to be held at the high school next week Friday will be held tomorrow afternoon with Mrs. Harry Ryland of 27 Grove street.

A meeting of the committee in charge of the annual reunion and dance to be held at the high school next week Friday will be held tomorrow afternoon with Mrs. Harry Ryland of 27 Grove street.

COACH OF CHAMP RUNNERS PREFERS COUNTRY YOUTHS

By TED APPLAGATE Associated Press Staff Writer

Coach of Champ Runners Prefers Country Youths

Coach of Champ Runners Prefers Country Youths

Coach of Champ Runners Prefers Country Youths

Coach of Champ Runners Prefers Country Youths

Coach of Champ Runners Prefers Country Youths

Coach of Champ Runners Prefers Country Youths

Coach of Champ Runners Prefers Country Youths

Coach of Champ Runners Prefers Country Youths

Coach of Champ Runners Prefers Country Youths

Coach of Champ Runners Prefers Country Youths

Coach of Champ Runners Prefers Country Youths

Coach of Champ Runners Prefers Country Youths

Coach of Champ Runners Prefers Country Youths

Coach of Champ Runners Prefers Country Youths

Coach of Champ Runners Prefers Country Youths

Coach of Champ Runners Prefers Country Youths

LOCAL SPORT CHATTER

McHale and Nelson Lead Over American Thread

McHale and Nelson Lead Over American Thread

McHale and Nelson Lead Over American Thread

McHale and Nelson Lead Over American Thread

McHale and Nelson Lead Over American Thread

McHale and Nelson Lead Over American Thread

McHale and Nelson Lead Over American Thread

McHale and Nelson Lead Over American Thread

McHale and Nelson Lead Over American Thread

McHale and Nelson Lead Over American Thread

McHale and Nelson Lead Over American Thread

&lt;



